

Anti-ATP5A1 antibody (Internal) (STJ73379)

STJ73379

GENERAL INFORMATION

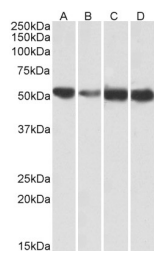
Product Type	Primary antibodies
Short Description	Goat polyclonal antibody anti-ATP5A1 (Internal) is suitable for use in ELISA and Immunohistochemistry research applications.
Applications	Pep-ELISA, IHC
Host/Source	Goat
Reactivity	Human, Mouse, Rat, Dog, Pig, Cow

PRODUCT PROPERTIES

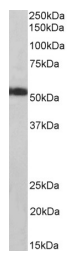
Clonality	Polyclonal
Clone ID	
Concentration	0.5 mg/mL
Conjugation	Unconjugated
Purification	Purified from goat serum by ammonium sulphate precipitation followed by antigen affinity chromatography using the immunizing peptide.
Dilution Range	WB-0.01-0.03µg/ml ELISA-antibody detection limit dilution 1:128000.
Formulation	0.5 mg/ml in Tris saline, 0.02% sodium azide, pH7.3 with 0.5% bovine serum albumin. NA
Isotype	IgG
Storage Instruction	Store at -20 on receipt and minimise freeze-thaw cycles.

TARGET INFORMATION

Gene ID	498
Gene Symbol	ATP5F1A
Uniprot ID	ATPA_HUMAN
Immunogen Region	Internal
Specificity	This antibody is expected to recognize all reported isoforms (NP_004037.1; NP_001244263.1; NP_001001935.1). Reported variants represent identical protein: NP_001244264.1, NP_001001935.1. Reported variants represent identical protein: NP_004037.1, NP_001001935.1.
Immunogen Sequence	RVHGLRNVQAEI



STJ73379 (0.01µg/ml) staining of Human (A), fetal Mouse (B), adult Mouse (C) and adult Rat (D) Heart lysates (35µg protein in RIPA buffer). Primary incubation was 1 hour. Detected by chemiluminescence.



STJ73379 (0.01µg/ml) staining of Pig Heart lysates (35µg protein in RIPA buffer). Primary incubation was 1 hour. Detected by chemiluminescence.

This product is suitable for in-vitro studies under the RESEARCH USE ONLY [RUO] licence. This product must not be used as for diagnostic or other medical purposes.
 St John's Laboratory Ltd, Knowledge Dock Business Centre, University Way, London, E16 2RD | Tel: 0208 223 3081