

Anti-CutA protein antibody (C-Term) (STJ73349)

STJ73349

GENERAL INFORMATION

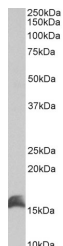
Product Type	Primary antibodies
Short Description	Goat polyclonal antibody anti-CutA protein (C-Term) is suitable for use in ELISA research applications.
Applications	Pep-ELISA
Host/Source	Goat
Reactivity	Human

PRODUCT PROPERTIES

Clonality	Polyclonal
Clone ID	
Concentration	0.5 mg/mL
Conjugation	Unconjugated
Purification	Purified from goat serum by ammonium sulphate precipitation followed by antigen affinity chromatography using the immunizing peptide.
Dilution	WB-1-3µg/ml
Range	IHC-5µg/ml
	ELISA-antibody detection limit dilution 1:64000.
Formulation	0.5 mg/ml in Tris saline, 0.02% sodium azide, pH7.3 with 0.5% bovine serum albumin. NA
Isotype	IgG
Storage Instruction	Store at -20 on receipt and minimise freeze-thaw cycles.

TARGET INFORMATION

Gene ID	51596
Gene Symbol	CUTA
Uniprot ID	CUTA_HUMAN
Immunogen	
Immunogen Region	C-Term
Specificity	This antibody is expected to recognize all reported isoforms (NP_001014433.1; NP_057005.1; NP_001014840.1). Reported variants represent identical protein: NP_001014837.1, NP_001014838.1, NP_057005.1.
Immunogen Sequence	QVTESVSDSIT



STJ73349 (1µg/ml) staining of Kelly lysate (35µg protein in RIPA buffer). Detected by chemiluminescence.

This product is suitable for in-vitro studies under the RESEARCH USE ONLY [RUO] licence. This product must not be used as for diagnostic or other medical purposes.
St John's Laboratory Ltd, Knowledge Dock Business Centre, University Way, London, E16 2RD | Tel: 0208 223 3081