

Anti-IL17C antibody (160-172) (STJ73345)

STJ73345

GENERAL INFORMATION

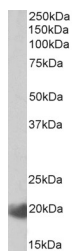
Product Type	Primary antibodies
Short Description	Goat polyclonal antibody anti-IL17C (160-172) is suitable for use in ELISA, Western Blot, Immunohistochemistry and Immunofluorescence research applications.
Applications	Pep-ELISA, WB, IHC, IF
Host/Source	Goat
Reactivity	Human

PRODUCT PROPERTIES

Clonality	Polyclonal
Clone ID	
Concentration	0.5 mg/mL
Conjugation	Unconjugated
Purification	Purified from goat serum by ammonium sulphate precipitation followed by antigen affinity chromatography using the immunizing peptide.
Dilution Range	WB-0.3-1µg/ml ELISA-antibody detection limit dilution 1:128000.
Formulation	0.5 mg/ml in Tris saline, 0.02% sodium azide, pH7.3 with 0.5% bovine serum albumin. NA
Isotype	IgG
Storage Instruction	Store at -20 on receipt and minimise freeze-thaw cycles.

TARGET INFORMATION

Gene ID	27189
Gene Symbol	IL17C
Uniprot ID	IL17C_HUMAN
Immunogen	
Immunogen Region	160-172
Specificity	
Immunogen Sequence	RRPCSRDGSGGLPT



STJ73345 (0.3µg/ml) staining of Human Lymph Node lysate (35µg protein in RIPA Buffer). Primary incubation was 1 hour. Detected by chemiluminescence.

This product is suitable for in-vitro studies under the RESEARCH USE ONLY [RUO] licence. This product must not be used as for diagnostic or other medical purposes.
St John's Laboratory Ltd, Knowledge Dock Business Centre, University Way, London, E16 2RD | Tel: 0208 223 3081