

## Anti-CBX3/HP1 Gamma, Biotinylated antibody (Internal) {Biotin} (STJ73292)

STJ73292

### GENERAL INFORMATION

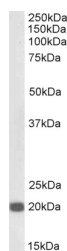
<b>Product Type</b>	Primary antibodies
<b>Short Description</b>	Goat polyclonal antibody anti-CBX3/HP1 Gamma, Biotinylated (Internal) is suitable for use in ELISA, Western Blot, Immunoprecipitation and Immunohistochemistry research applications.
<b>Applications</b>	Pep-ELISA, WB, IP, IHC
<b>Host/Source</b>	Goat
<b>Reactivity</b>	Human, Mouse, Rat, Dog

### PRODUCT PROPERTIES

<b>Clonality</b>	Polyclonal
<b>Clone ID</b>	
<b>Concentration</b>	0.5 mg/mL
<b>Conjugation</b>	Biotin
<b>Purification</b>	Purified from goat serum by ammonium sulphate precipitation followed by antigen affinity chromatography using the immunizing peptide.
<b>Dilution Range</b>	WB-0.1-0.3µg/ml ELISA-antibody detection limit dilution 1:32000.
<b>Formulation</b>	0.5 mg/ml in Tris saline, 0.02% sodium azide, pH7.3 with 0.5% bovine serum albumin. NA
<b>Isotype</b>	IgG
<b>Storage Instruction</b>	Store at -20 on receipt and minimise freeze-thaw cycles.

### TARGET INFORMATION

<b>Gene ID</b>	11335
<b>Gene Symbol</b>	CBX3
<b>Uniprot ID</b>	CBX3_HUMAN
<b>Immunogen</b>	Internal
<b>Region</b>	
<b>Specificity</b>	No cross-reactivity expected with HP1-alpha and HP1-beta. Reported variants represent identical protein: NP_009207.2, NP_057671.2
<b>Immunogen Sequence</b>	CEAFLNQKAGKEKD.



Biotinylated STJ70791 (0.3µg/ml) staining of NIH3T3 lysate (35µg protein in RIPA buffer), exactly mirroring its parental non-biotinylated product. Primary incubation was 1 hour. Detected by chemiluminescence, using streptavidin-HRP and using NAP blocker as a substitute for skimmed milk.

This product is suitable for in-vitro studies under the RESEARCH USE ONLY [RUO] licence. This product must not be used as for diagnostic or other medical purposes.  
St John's Laboratory Ltd, Knowledge Dock Business Centre, University Way, London, E16 2RD | Tel: 0208 223 3081