

## Anti-CD20/MS4A1, biotinylated antibody (C-Term) {Biotin} (STJ73273)

STJ73273

### GENERAL INFORMATION

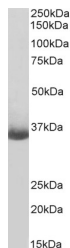
|                          |  |
|--------------------------|--|
| <b>Product Type</b>      | Primary antibodies   |
| <b>Short Description</b> | Goat polyclonal antibody anti-CD20/MS4A1, biotinylated (C-Term) is suitable for use in ELISA and Western Blot research applications. |
| <b>Applications</b>      | Pep-ELISA, WB  |
| <b>Host/Source</b>       | Goat   |
| <b>Reactivity</b>        | Human  |

### PRODUCT PROPERTIES

|                            |   |
|----------------------------|---|
| <b>Clonality</b>           | Polyclonal  |
| <b>Clone ID</b>            |   |
| <b>Concentration</b>       | 0.5 mg/mL   |
| <b>Conjugation</b>         | Biotin  |
| <b>Purification</b>        | Purified from goat serum by ammonium sulphate precipitation followed by antigen affinity chromatography using the immunizing peptide. |
| <b>Dilution Range</b>      | WB-0.3-1µg/ml<br>ELISA-antibody detection limit dilution 1:2000.  |
| <b>Formulation</b>         | 0.5 mg/ml in Tris saline, 0.02% sodium azide, pH7.3 with 0.5% bovine serum albumin. NA  |
| <b>Isotype</b>             | IgG   |
| <b>Storage Instruction</b> | Store at -20 on receipt and minimise freeze-thaw cycles.  |

### TARGET INFORMATION

|                           |   |
|---------------------------|---|
| <b>Gene ID</b>            | 931   |
| <b>Gene Symbol</b>        | MS4A1   |
| <b>Uniprot ID</b>         | CD20_HUMAN  |
| <b>Immunogen</b>          |   |
| <b>Immunogen Region</b>   | C-Term  |
| <b>Specificity</b>        | Reported variants represent identical protein: NP_068769.2, NP_690605.1 |
| <b>Immunogen Sequence</b> | CQDQESSPIENDSSP.  |



Biotinylated STJ70052 (0.3µg/ml) staining of Daudi lysate (35µg protein in RIPA buffer). Primary incubation was 1 hour. Detected by chemiluminescence, using streptavidin-HRP and using NAP blocker as a substitute for skimmed milk.