

## Anti-NDRG1, Biotinylated antibody (C-Term) {Biotin} (STJ73261)

STJ73261

### GENERAL INFORMATION

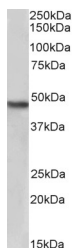
|                          |   |
|--------------------------|---|
| <b>Product Type</b>      | Primary antibodies  |
| <b>Short Description</b> | Goat polyclonal antibody anti-NDRG1, Biotinylated (C-Term) is suitable for use in ELISA, Western Blot and Immunohistochemistry research applications. |
| <b>Applications</b>      | Pep-ELISA, WB, IHC  |
| <b>Host/Source</b>       | Goat  |
| <b>Reactivity</b>        | Human   |

### PRODUCT PROPERTIES

|                            |   |
|----------------------------|---|
| <b>Clonality</b>           | Polyclonal  |
| <b>Clone ID</b>            |   |
| <b>Concentration</b>       | 0.5 mg/mL   |
| <b>Conjugation</b>         | Biotin  |
| <b>Purification</b>        | Purified from goat serum by ammonium sulphate precipitation followed by antigen affinity chromatography using the immunizing peptide. |
| <b>Dilution Range</b>      | WB-2-4µg/ml<br>ELISA-antibody detection limit dilution 1:32000.   |
| <b>Formulation</b>         | 0.5 mg/ml in Tris saline, 0.02% sodium azide, pH7.3 with 0.5% bovine serum albumin. NA  |
| <b>Isotype</b>             | IgG   |
| <b>Storage Instruction</b> | Store at -20 on receipt and minimise freeze-thaw cycles.  |

### TARGET INFORMATION

|                           |  |
|---------------------------|--|
| <b>Gene ID</b>            | 10397  |
| <b>Gene Symbol</b>        | NDRG1  |
| <b>Uniprot ID</b>         | NDRG1_HUMAN  |
| <b>Immunogen</b>          |  |
| <b>Immunogen Region</b>   | C-Term   |
| <b>Specificity</b>        | Reported variants represent identical protein: NP_006087.2, NP_001128714.1 |
| <b>Immunogen Sequence</b> | GNSAGPKSMEVSC.   |



Biotinylated STJ70275 (2µg/ml) staining of Human Kidney lysate (35µg protein in RIPA buffer), exactly mirroring its parental non-biotinylated product. Primary incubation was 1 hour. Detected by chemiluminescence, using streptavidin-HRP and using NAP blocker as a substitute for skimmed milk.