

Anti-IFITM3 antibody (Internal) (STJ73251)

STJ73251

GENERAL INFORMATION

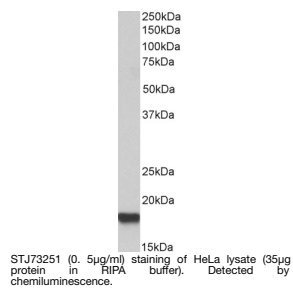
Product Type	Primary antibodies
Short Description	Goat polyclonal antibody anti-IFITM3 (Internal) is suitable for use in ELISA, Western Blot and Immunohistochemistry research applications.
Applications	Pep-ELISA, WB, IHC
Host/Source	Goat
Reactivity	Human

PRODUCT PROPERTIES

Clonality	Polyclonal
Clone ID	
Concentration	0.5 mg/mL
Conjugation	Unconjugated
Purification	Purified from goat serum by ammonium sulphate precipitation followed by antigen affinity chromatography using the immunizing peptide.
Dilution Range	WB-0.3-1µg/ml IHC-2.5µg/ml ELISA-antibody detection limit dilution 1:64000.
Formulation	0.5 mg/ml in Tris saline, 0.02% sodium azide, pH7.3 with 0.5% bovine serum albumin. NA
Isotype	IgG
Storage Instruction	Store at -20 on receipt and minimise freeze-thaw cycles.

TARGET INFORMATION

Gene ID	10410
Gene Symbol	IFITM3
Uniprot ID	IFM3_HUMAN
Immunogen	
Immunogen Region	Internal
Specificity	The immunizing peptide only differs by one residue from IFITM2 and therefore cross-reactivity of this antibody is to be expected.
Immunogen Sequence	HNPAPPTSTVIHRS



This product is suitable for in-vitro studies under the RESEARCH USE ONLY [RUO] licence. This product must not be used as for diagnostic or other medical purposes.
St John's Laboratory Ltd, Knowledge Dock Business Centre, University Way, London, E16 2RD | Tel: 0208 223 3081