

## Anti-HSPA5/GRP78 antibody (Internal) (STJ73250)

STJ73250

### GENERAL INFORMATION

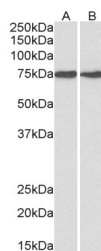
<b>Product Type</b>	Primary antibodies
<b>Short Description</b>	Goat polyclonal antibody anti-HSPA5/GRP78 (Internal) is suitable for use in ELISA and Western Blot research applications.
<b>Applications</b>	Pep-ELISA, WB
<b>Host/Source</b>	Goat
<b>Reactivity</b>	Human

### PRODUCT PROPERTIES

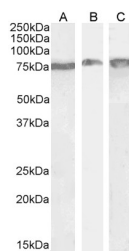
<b>Clonality</b>	Polyclonal
<b>Clone ID</b>	
<b>Concentration</b>	0.5 mg/mL
<b>Conjugation</b>	Unconjugated
<b>Purification</b>	Purified from goat serum by ammonium sulphate precipitation followed by antigen affinity chromatography using the immunizing peptide.
<b>Dilution Range</b>	IHC-5µg/ml IF-Expression of the protein seen in the cytoplasm of HeLa cells. 5µg/ml ELISA-antibody detection limit dilution 1:16000.
<b>Formulation</b>	0.5 mg/ml in Tris saline, 0.02% sodium azide, pH7.3 with 0.5% bovine serum albumin. NA
<b>Isotype</b>	IgG
<b>Storage Instruction</b>	Store at -20 on receipt and minimise freeze-thaw cycles.

### TARGET INFORMATION

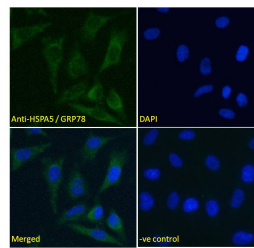
<b>Gene ID</b>	3309
<b>Gene Symbol</b>	HSPA5
<b>Uniprot ID</b>	BIP_HUMAN
<b>Immunogen</b>	
<b>Immunogen Region</b>	Internal
<b>Specificity</b>	
<b>Immunogen Sequence</b>	ESHQDADIEDFK



STJ73250 (1µg/ml) staining of HepG2 (A) and MCF7 (B) lysates (35µg protein in RIPA buffer). Detected by chemiluminescence.



STJ73250 (0.3µg/ml) staining of Mouse Liver (A) and Testes (B) and (0.5µg/ml) Rat Brain (C) lysate (35µg protein in RIPA buffer). Detected by chemiluminescence.



STJ73250 Immunofluorescence analysis of paraformaldehyde fixed HeLa cells, permeabilized with 0.15% Triton. Primary incubation 1hr (5µg/ml) followed by Alexa Fluor 488 secondary antibody (2µg/ml) showing cytoplasmic staining. The nuclear stain is DAPI (blue). Negative control: Unimmunized goat IgG (5µg/ml) followed by Alexa Fluor 488 secondary antibody (2µg/ml).