

Anti-HSPA5/GRP78 antibody (118-131) (STJ73249)

STJ73249

GENERAL INFORMATION

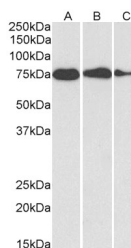
Product Type	Primary antibodies
Short Description	Goat polyclonal antibody anti-HSPA5/GRP78 (118-131) is suitable for use in ELISA and Western Blot research applications.
Applications	Pep-ELISA, WB
Host/Source	Goat
Reactivity	Human

PRODUCT PROPERTIES

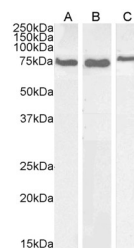
Clonality	Polyclonal
Clone ID	
Concentration	0.5 mg/mL
Conjugation	Unconjugated
Purification	Purified from goat serum by ammonium sulphate precipitation followed by antigen affinity chromatography using the immunizing peptide.
Dilution Range	IF-Strong expression of the protein seen in the cytoplasm of HeLa cells. 5µg/ml ELISA-antibody detection limit dilution 1:128000.
Formulation	0.5 mg/ml in Tris saline, 0.02% sodium azide, pH7.3 with 0.5% bovine serum albumin. NA
Isotype	IgG
Storage Instruction	Store at -20 on receipt and minimise freeze-thaw cycles.

TARGET INFORMATION

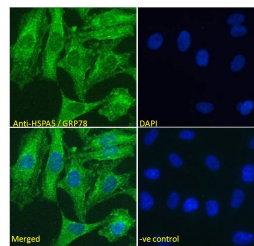
Gene ID	3309
Gene Symbol	HSPA5
Uniprot ID	BIP_HUMAN
Immunogen	
Immunogen Region	118-131
Specificity	
Immunogen Sequence	KVVEKTKPKYIQVD



STJ73249 (0.1µg/ml) staining of HepG2 (A), HeLa (B) and MCF7 (C) cell lysate (35µg protein in RIPA buffer). Detected by chemiluminescence.



STJ73249 (0.01µg/ml) staining of Mouse Liver (A) and Testes (B) and Rat Brain (C) lysate (35µg protein in RIPA buffer). Detected by chemiluminescence.



STJ73249 Immunofluorescence analysis of paraformaldehyde fixed HeLa cells, permeabilized with 0.15% Triton. Primary incubation 1hr (5µg/ml) followed by Alexa Fluor 488 secondary antibody (2µg/ml) showing cytoplasmic staining. The nuclear stain is DAPI (blue). Negative control: Unimmunized goat IgG (5µg/ml) followed by Alexa Fluor 488 secondary antibody (2µg/ml).

This product is suitable for in-vitro studies under the RESEARCH USE ONLY [RUO] licence. This product must not be used as for diagnostic or other medical purposes.
St John's Laboratory Ltd, Knowledge Dock Business Centre, University Way, London, E16 2RD | Tel: 0208 223 3081