

Anti-HSP60/HSPD1 antibody (333-344) (STJ73246)

STJ73246

GENERAL INFORMATION

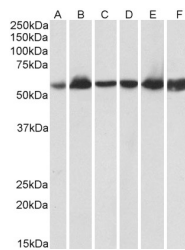
Product Type	Primary antibodies
Short Description	Goat polyclonal antibody anti-HSP60/HSPD1 (333-344) is suitable for use in ELISA and Western Blot research applications.
Applications	Pep-ELISA, WB
Host/Source	Goat
Reactivity	Human, Dog, Pig, Cow

PRODUCT PROPERTIES

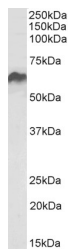
Clonality	Polyclonal
Clone ID	
Concentration	0.5 mg/mL
Conjugation	Unconjugated
Purification	Purified from goat serum by ammonium sulphate precipitation followed by antigen affinity chromatography using the immunizing peptide.
Dilution Range	IHC-5µg/ml IF-Immunofluorescence: Strong expression of the protein seen in the Mitochondria of HeLa cells. 10µg/ml ELISA-antibody detection limit dilution 1:64000.
Formulation	0.5 mg/ml in Tris saline, 0.02% sodium azide, pH7.3 with 0.5% bovine serum albumin. NA
Isotype	IgG
Storage Instruction	Store at -20 on receipt and minimise freeze-thaw cycles.

TARGET INFORMATION

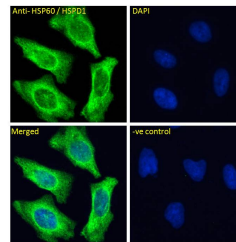
Gene ID	3329
Gene Symbol	HSPD1
Uniprot ID	CH60_HUMAN
Immunogen	
Immunogen Region	333-344
Specificity	Reported variants represent identical protein: NP_955472.1, NP_002147.2.
Immunogen Sequence	NLEDVQPHDLGK



STJ73246 (0.03µg/ml) staining of Human Heart (A), Kidney (B) and Liver (C) lysate and in Pig Heart (D), Kidney (E) and Liver (F) lysate (35µg protein in RIPA buffer). Detected by chemiluminescence.



STJ73246 (0.1µg/ml) staining of Rat Kidney lysate (35µg protein in RIPA buffer). Detected by chemiluminescence.



STJ73246 Immunofluorescence analysis of paraformaldehyde fixed HeLa cells, permeabilized with 0.15% Triton. Primary incubation 1hr (10µg/ml) followed by Alexa Fluor 488 secondary antibody (4µg/ml), showing Mitochondrial staining. The nuclear stain is DAPI (blue). Negative control: Unimmunized goat IgG (10µg/ml) followed by Alexa Fluor 488 secondary antibody (4µg/ml).