

Anti-PRKACA antibody (Internal) (STJ73243)

STJ73243

GENERAL INFORMATION

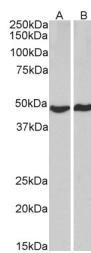
Product Type	Primary antibodies
Short Description	Goat polyclonal antibody anti-PRKACA (Internal) is suitable for use in ELISA and Western Blot research applications.
Applications	Pep-ELISA, WB
Host/Source	Goat
Reactivity	Human

PRODUCT PROPERTIES

Clonality	Polyclonal
Clone ID	
Concentration	0.5 mg/mL
Conjugation	Unconjugated
Purification	Purified from goat serum by ammonium sulphate precipitation followed by antigen affinity chromatography using the immunizing peptide.
Dilution	WB-1-3µg/ml
Range	ELISA-antibody detection limit dilution 1:8000.
Formulation	0.5 mg/ml in Tris saline, 0.02% sodium azide, pH7.3 with 0.5% bovine serum albumin. NA
Isotype	IgG
Storage	Store at -20 on receipt and minimise freeze-thaw cycles.
Instruction	

TARGET INFORMATION

Gene ID	5566
Gene Symbol	PRKACA
Uniprot ID	KAPCA_HUMAN
Immunogen	
Immunogen Region	Internal
Specificity	This antibody is expected to recognize all three reported isoforms (NP_002721.1; NP_997401.1; NP_001291278.1). Based on the choice of the immunizing peptide there is no expected cross-reactivity with the other subunits.
Immunogen Sequence	ESPAQNTAHLQ



STJ73243 (2µg/ml) staining of HeLa (A) and MCF7 (B) lysates (35µg protein in RIPA buffer). Primary incubation was 1 hour. Detected by chemiluminescence.

This product is suitable for in-vitro studies under the RESEARCH USE ONLY [RUO] licence. This product must not be used as for diagnostic or other medical purposes.
 St John's Laboratory Ltd, Knowledge Dock Business Centre, University Way, London, E16 2RD | Tel: 0208 223 3081