

Anti-Laforin, Biotinylated-Isoform a antibody (Internal) {Biotin} (STJ73180)

STJ73180

GENERAL INFORMATION

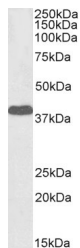
| | |
|--------------------------|---|
| Product Type | Primary antibodies |
| Short Description | Goat polyclonal antibody anti-Laforin, Biotinylated-Isoform a (Internal) is suitable for use in ELISA and Western Blot research applications. |
| Applications | Pep-ELISA, WB |
| Host/Source | Goat |
| Reactivity | Human, Mouse, Rat, Dog, Cow |

PRODUCT PROPERTIES

| | |
|----------------------------|---|
| Clonality | Polyclonal |
| Clone ID | |
| Concentration | 0.5 mg/mL |
| Conjugation | Biotin |
| Purification | Purified from goat serum by ammonium sulphate precipitation followed by antigen affinity chromatography using the immunizing peptide. |
| Dilution Range | WB-1-3µg/ml ELISA-antibody detection limit dilution 1:16000. |
| Formulation | 0.5 mg/ml in Tris saline, 0.02% sodium azide, pH7.3 with 0.5% bovine serum albumin. NA |
| Isotype | IgG |
| Storage Instruction | Store at -20 on receipt and minimise freeze-thaw cycles. |

TARGET INFORMATION

| | |
|---------------------------|--|
| Gene ID | 7957 |
| Gene Symbol | EPM2A |
| Uniprot ID | EPM2A_HUMAN |
| Immunogen | |
| Immunogen Region | Internal |
| Specificity | This antibody is expected to recognize isoform a (NP_005661.1) only. |
| Immunogen Sequence | EATGHTNEMKHTTD. |



Biotinylated STJ71586 (1µg/ml) staining of Human Cerebellum lysate (35µg protein in RIPA buffer), exactly mirroring its parental non-biotinylated product. Primary incubation was 1 hour. Detected by chemiluminescence, using streptavidin-HRP and using NAP blocker as a substitute for skimmed milk.

This product is suitable for in-vitro studies under the RESEARCH USE ONLY [RUO] licence. This product must not be used as for diagnostic or other medical purposes.
St John's Laboratory Ltd, Knowledge Dock Business Centre, University Way, London, E16 2RD | Tel: 0208 223 3081