

## Anti-FCRL1 antibody (C-Term) (STJ73124)

STJ73124

### GENERAL INFORMATION

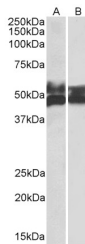
|                          |   |
|--------------------------|---|
| <b>Product Type</b>      | Primary antibodies  |
| <b>Short Description</b> | Goat polyclonal antibody anti-FCRL1 (C-Term) is suitable for use in ELISA and Western Blot research applications. |
| <b>Applications</b>      | Pep-ELISA, WB   |
| <b>Host/Source</b>       | Goat  |
| <b>Reactivity</b>        | Human   |

### PRODUCT PROPERTIES

|                            |   |
|----------------------------|---|
| <b>Clonality</b>           | Polyclonal  |
| <b>Clone ID</b>            |   |
| <b>Concentration</b>       | 0.5 mg/mL   |
| <b>Conjugation</b>         | Unconjugated  |
| <b>Purification</b>        | Purified from goat serum by ammonium sulphate precipitation followed by antigen affinity chromatography using the immunizing peptide. |
| <b>Dilution Range</b>      | WB-0.3-1µg/ml<br>ELISA-antibody detection limit dilution 1:64000.   |
| <b>Formulation</b>         | 0.5 mg/ml in Tris saline, 0.02% sodium azide, pH7.3 with 0.5% bovine serum albumin. NA  |
| <b>Isotype</b>             | IgG   |
| <b>Storage Instruction</b> | Store at-20 on receipt and minimise freeze-thaw cycles.   |

### TARGET INFORMATION

|                           |  |
|---------------------------|--|
| <b>Gene ID</b>            | 115350   |
| <b>Gene Symbol</b>        | FCRL1  |
| <b>Uniprot ID</b>         | FCRL1_HUMAN  |
| <b>Immunogen</b>          |  |
| <b>Immunogen Region</b>   | C-Term   |
| <b>Specificity</b>        | This antibody is expected to recognize isoform 1 (NP_443170.1) and isoform 3 (NP_001152870.1). |
| <b>Immunogen Sequence</b> | SRLRKANITDVD   |



STJ73124 (0.5µg/ml) staining of Human Tonsil (A) and Thymus (B) lysates (35µg protein in RIPA buffer). Primary incubation was 1 hour. Detected by chemiluminescence.

This product is suitable for in-vitro studies under the RESEARCH USE ONLY [RUO] licence. This product must not be used as for diagnostic or other medical purposes.  
St John's Laboratory Ltd, Knowledge Dock Business Centre, University Way, London, E16 2RD | Tel: 0208 223 3081