

Anti-ITGA1/VLA1 antibody (Internal) (STJ73093)

STJ73093

GENERAL INFORMATION

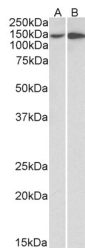
Product Type	Primary antibodies
Short Description	Goat polyclonal antibody anti-ITGA1/VLA1 (Internal) is suitable for use in Pep-ELSA and Western Blot research applications.
Applications	Pep-ELSA, WB
Host/Source	Goat
Reactivity	Human

PRODUCT PROPERTIES

Clonality	Polyclonal
Clone ID	
Concentration	0.5 mg/mL
Conjugation	Unconjugated
Purification	Purified from goat serum by ammonium sulphate precipitation followed by antigen affinity chromatography using the immunizing peptide.
Dilution Range	WB-0.3-1µg/ml ELISA-antibody detection limit dilution 1:128000.
Formulation	0.5 mg/ml in Tris saline, 0.02% sodium azide, pH7.3 with 0.5% bovine serum albumin. NA
Isotype	IgG
Storage Instruction	Store at -20 on receipt and minimise freeze-thaw cycles.

TARGET INFORMATION

Gene ID	3672
Gene Symbol	ITGA1
Uniprot ID	ITA1_HUMAN
Immunogen	
Immunogen Region	Internal
Specificity	
Immunogen Sequence	DKHDFQDSVRIT



STJ73093 (0.5µg/ml) staining of HeLa (A) and HepG2 (B) lysates (55µg protein in RIPA buffer). Primary incubation was 1 hour. Detected by chemiluminescence.

This product is suitable for in-vitro studies under the RESEARCH USE ONLY [RUO] licence. This product must not be used as for diagnostic or other medical purposes.
St John's Laboratory Ltd, Knowledge Dock Business Centre, University Way, London, E16 2RD | Tel: 0208 223 3081