

## Anti-alpha-1-antitrypsin antibody (230-241) (STJ73055)

STJ73055

### GENERAL INFORMATION

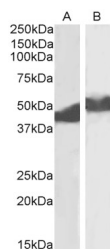
<b>Product Type</b>	Primary antibodies
<b>Short Description</b>	Goat polyclonal antibody anti-alpha-1-antitrypsin (230-241) is suitable for use in ELISA, Western Blot, Immunohistochemistry and Immunofluorescence research applications.
<b>Applications</b>	Pep-ELISA, WB, IHC, IF
<b>Host/Source</b>	Goat
<b>Reactivity</b>	Human

### PRODUCT PROPERTIES

<b>Clonality</b>	Polyclonal
<b>Clone ID</b>	
<b>Concentration</b>	0.5 mg/mL
<b>Conjugation</b>	Unconjugated
<b>Purification</b>	Purified from goat serum by ammonium sulphate precipitation followed by antigen affinity chromatography using the immunizing peptide.
<b>Dilution Range</b>	WB-0.01-0.03µg/ml ELISA-antibody detection limit dilution 1:128000.
<b>Formulation</b>	0.5 mg/ml in Tris saline, 0.02% sodium azide, pH7.3 with 0.5% bovine serum albumin. NA
<b>Isotype</b>	IgG
<b>Storage Instruction</b>	Store at -20 on receipt and minimise freeze-thaw cycles.

### TARGET INFORMATION

<b>Gene ID</b>	5265
<b>Gene Symbol</b>	SERPINA1
<b>Uniprot ID</b>	A1AT_HUMAN
<b>Immunogen Region</b>	230-241
<b>Specificity</b>	Reported variants represent identical protein: NP_001121174.1, NP_001121179.1, NP_001121172.1, NP_001121177.1, NP_001121178.1, NP_001121176.1, NP_001121175.1, NP_000286.3, NP_001121173.1, NP_001002236.1, NP_001002235.1.
<b>Immunogen Sequence</b>	EDFHVDQVTTVK



STJ73055 (0.01µg/ml) staining of Albumin-depleted Plasma (A) and Serum (B) lysates (35µg protein in RIPA buffer). Primary incubation was 1 hour. Detected by chemiluminescence.