

Anti-ENPP2/AUTOTAXIN antibody (698-712) (STJ73041)

STJ73041

GENERAL INFORMATION

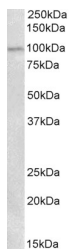
| | |
|--------------------------|--|
| Product Type | Primary antibodies |
| Short Description | Goat polyclonal antibody anti-ENPP2/AUTOTAXIN (698-712) is suitable for use in ELISA, Western Blot and Immunohistochemistry research applications. |
| Applications | Pep-ELISA, WB, IHC |
| Host/Source | Goat |
| Reactivity | Human |

PRODUCT PROPERTIES

| | |
|----------------------------|---|
| Clonality | Polyclonal |
| Clone ID | |
| Concentration | 0.5 mg/mL |
| Conjugation | Unconjugated |
| Purification | Purified from goat serum by ammonium sulphate precipitation followed by antigen affinity chromatography using the immunizing peptide. |
| Dilution Range | WB-0.3-1µg/ml IHC-5µg/ml ELISA-antibody detection limit dilution 1:128000. |
| Formulation | 0.5 mg/ml in Tris saline, 0.02% sodium azide, pH7.3 with 0.5% bovine serum albumin. NA |
| Isotype | IgG |
| Storage Instruction | Store at -20 on receipt and minimise freeze-thaw cycles. |

TARGET INFORMATION

| | |
|---------------------------|---|
| Gene ID | 5168 |
| Gene Symbol | ENPP2 |
| Uniprot ID | ENPP2_HUMAN |
| Immunogen | 698-712 |
| Region | |
| Specificity | This antibody is expected to recognize all reported isoforms (NP_006200.3; NP_001035181.1, NP_001124335.1). |
| Immunogen Sequence | PDHLTSCVRPDVRVS |



STJ73041 (0.3µg/ml) staining of Human Placenta lysate (35µg protein in RIPA buffer). Detected by chemiluminescence.