

Anti-RPA1/RPA70 antibody (323-337) (STJ73015)

STJ73015

GENERAL INFORMATION

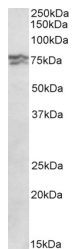
| | |
|--------------------------|---|
| Product Type | Primary antibodies |
| Short Description | Goat polyclonal antibody anti-RPA1/RPA70 (323-337) is suitable for use in ELISA, Western Blot and Immunohistochemistry research applications. |
| Applications | Pep-ELISA, WB, IHC |
| Host/Source | Goat |
| Reactivity | Human |

PRODUCT PROPERTIES

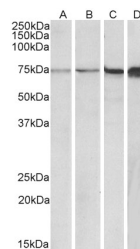
| | |
|----------------------------|---|
| Clonality | Polyclonal |
| Clone ID | |
| Concentration | 0.5 mg/mL |
| Conjugation | Unconjugated |
| Purification | Purified from goat serum by ammonium sulphate precipitation followed by antigen affinity chromatography using the immunizing peptide. |
| Dilution Range | ELISA-antibody detection limit dilution 1:128000. |
| Formulation | 0.5 mg/ml in Tris saline, 0.02% sodium azide, pH7.3 with 0.5% bovine serum albumin. NA |
| Isotype | IgG |
| Storage Instruction | Store at -20 on receipt and minimise freeze-thaw cycles. |

TARGET INFORMATION

| | |
|--------------------|-----------------|
| Gene ID | 6117 |
| Gene Symbol | RPA1 |
| Uniprot ID | RFA1_HUMAN |
| Immunogen | |
| Immunogen | 323-337 |
| Region | |
| Specificity | |
| Immunogen | CKSYEDATKITVRSN |
| Sequence | |



STJ73015 (0.3 µg/ml) staining of HeLa lysate (35 µg protein in RIPA buffer). Primary incubation was 1 hour. Detected by chemiluminescence.



STJ73015 (0.5 µg/ml) staining of NIH3T3 (A), 3T3L1 (B), Mouse Lymph Node (C) and NSO (D) lysates (35 µg protein in RIPA buffer). Primary incubation was 1 hour. Detected by chemiluminescence.