

Anti-DMTF1 antibody (629-642) (STJ73006)

STJ73006

GENERAL INFORMATION

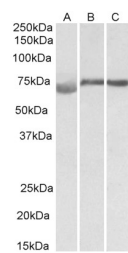
Product Type	Primary antibodies
Short Description	Goat polyclonal antibody anti-DMTF1 (629-642) is suitable for use in ELISA, Western Blot and Immunohistochemistry research applications.
Applications	Pep-ELISA, WB, IHC
Host/Source	Goat
Reactivity	Human, Mouse, Dog, Pig, Cow

PRODUCT PROPERTIES

Clonality	Polyclonal
Clone ID	
Concentration	0.5 mg/mL
Conjugation	Unconjugated
Purification	Purified from goat serum by ammonium sulphate precipitation followed by antigen affinity chromatography using the immunizing peptide.
Dilution Range	WB-1-3µg/ml ELISA-antibody detection limit dilution 1:8000.
Formulation	0.5 mg/ml in Tris saline, 0.02% sodium azide, pH7.3 with 0.5% bovine serum albumin. NA
Isotype	IgG
Storage Instruction	Store at -20 on receipt and minimise freeze-thaw cycles.

TARGET INFORMATION

Gene ID	9988
Gene Symbol	DMTF1
Uniprot ID	DMTF1_HUMAN
Immunogen	
Immunogen Region	629-642
Specificity	This antibody is expected to recognize both reported isoforms (NP_066968.3; NP_001135798.1). Reported variants represent identical protein: NP_066968.3, NP_001135799.1
Immunogen Sequence	DAHVSKFSDQNSTE



STJ73006 (1µg/ml) staining of Human (A), Mouse (B) and Rat (C) testis lysate (35µg protein in RIPA buffer). Primary incubation was 1 hour. Detected by chemiluminescence.