

Anti-CCDC3 antibody (134-148) (STJ72975)

STJ72975

GENERAL INFORMATION

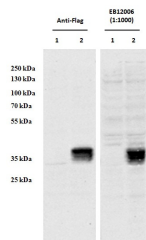
Product Type	Primary antibodies
Short Description	Goat polyclonal antibody anti-CCDC3 (134-148) is suitable for use in ELISA and Western Blot research applications.
Applications	Pep-ELISA, WB
Host/Source	Goat
Reactivity	Human, Mouse, Rat, Dog, Pig, Cow

PRODUCT PROPERTIES

Clonality	Polyclonal
Clone ID	
Concentration	0.5 mg/mL
Conjugation	Unconjugated
Purification	Purified from goat serum by ammonium sulphate precipitation followed by antigen affinity chromatography using the immunizing peptide.
Dilution Range	IHC-5µg/ml ELISA-antibody detection limit dilution 1:64000.
Formulation	0.5 mg/ml in Tris saline, 0.02% sodium azide, pH7.3 with 0.5% bovine serum albumin. NA
Isotype	IgG
Storage Instruction	Store at -20 on receipt and minimise freeze-thaw cycles.

TARGET INFORMATION

Gene ID	83643
Gene Symbol	CCDC3
Uniprot ID	CCDC3_HUMAN
Immunogen	
Immunogen Region	134-148
Specificity	
Immunogen Sequence	PHGVNFQDAIFPDTQ



HEK293 overexpressing Human CCDC3 with C-terminal tag (DYKDDDDK) and probed with anti-DYKDDDDK in the left panel and with STJ72975 (0.5 µg/ml) in the right panel (empty vector transfection in first lanes). Data obtained from Dr. YangXin Fu, Dept Oncology, University of Alberta, Edmonton, Canada.

This product is suitable for in-vitro studies under the RESEARCH USE ONLY [RUO] licence. This product must not be used as for diagnostic or other medical purposes.
St John's Laboratory Ltd, Knowledge Dock Business Centre, University Way, London, E16 2RD | Tel: 0208 223 3081