

## Anti-EAAT1/GLAST1 antibody (C-Term) (STJ72935)

STJ72935

### GENERAL INFORMATION

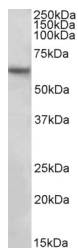
|                          |  |
|--------------------------|--|
| <b>Product Type</b>      | Primary antibodies   |
| <b>Short Description</b> | Goat polyclonal antibody anti-EAAT1/GLAST1 (C-Term) is suitable for use in ELISA, Western Blot and Immunohistochemistry research applications. |
| <b>Applications</b>      | Pep-ELISA, WB, IHC   |
| <b>Host/Source</b>       | Goat   |
| <b>Reactivity</b>        | Human  |

### PRODUCT PROPERTIES

|                            |   |
|----------------------------|---|
| <b>Clonality</b>           | Polyclonal  |
| <b>Clone ID</b>            |   |
| <b>Concentration</b>       | 0.5 mg/mL   |
| <b>Conjugation</b>         | Unconjugated  |
| <b>Purification</b>        | Purified from goat serum by ammonium sulphate precipitation followed by antigen affinity chromatography using the immunizing peptide. |
| <b>Dilution Range</b>      | WB-1-3µg/ml<br>ELISA-antibody detection limit dilution 1:8000.  |
| <b>Formulation</b>         | 0.5 mg/ml in Tris saline, 0.02% sodium azide, pH7.3 with 0.5% bovine serum albumin. NA  |
| <b>Isotype</b>             | IgG   |
| <b>Storage Instruction</b> | Store at -20 on receipt and minimise freeze-thaw cycles.  |

### TARGET INFORMATION

|                           |  |
|---------------------------|--|
| <b>Gene ID</b>            | 6507   |
| <b>Gene Symbol</b>        | SLC1A3   |
| <b>Uniprot ID</b>         | EAA1_HUMAN   |
| <b>Immunogen</b>          |  |
| <b>Immunogen Region</b>   | C-Term   |
| <b>Specificity</b>        | This antibody is expected to recognize isoform 1 (NP_004163.3) and isoform 2 (NP_001160167.1). |
| <b>Immunogen Sequence</b> | DNETEKPIDSETK  |



STJ72935 (2µg/ml) staining of Human Hippocampus lysate (5µg protein in RIPA buffer). Primary incubation was 1 hour. Detected by chemiluminescence.