

Anti-DUSP6/MKP3 antibody (C-Term) (STJ72927)

STJ72927

GENERAL INFORMATION

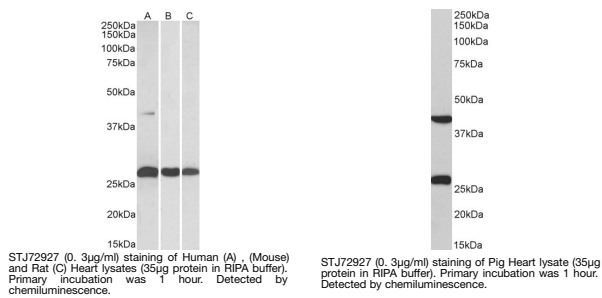
Product Type	Primary antibodies
Short Description	Goat polyclonal antibody anti-DUSP6/MKP3 (C-Term) is suitable for use in ELISA and Western Blot research applications.
Applications	Pep-ELISA, WB
Host/Source	Goat
Reactivity	Human, Mouse, Rat, Dog, Pig, Cow

PRODUCT PROPERTIES

Clonality	Polyclonal
Clone ID	
Concentration	0.5 mg/mL
Conjugation	Unconjugated
Purification	Purified from goat serum by ammonium sulphate precipitation followed by antigen affinity chromatography using the immunizing peptide.
Dilution Range	WB-0.3-1µg/ml ELISA-antibody detection limit dilution 1:128000.
Formulation	0.5 mg/ml in Tris saline, 0.02% sodium azide, pH7.3 with 0.5% bovine serum albumin. NA
Isotype	IgG
Storage Instruction	Store at-20 on receipt and minimise freeze-thaw cycles.

TARGET INFORMATION

Gene ID	1848
Gene Symbol	DUSP6
Uniprot ID	DUS6_HUMAN
Immunogen	
Immunogen Region	C-Term
Specificity	This antibody is expected to recognize both reported isoforms (NP_001937.2; NP_073143.2).
Immunogen Sequence	PSNQNVYQVDSLQST



This product is suitable for in-vitro studies under the RESEARCH USE ONLY [RUO] licence. This product must not be used as for diagnostic or other medical purposes.
St John's Laboratory Ltd, Knowledge Dock Business Centre, University Way, London, E16 2RD | Tel: 0208 223 3081