

## Anti-THNSL2 antibody (192-204) (STJ72926)

STJ72926

### GENERAL INFORMATION

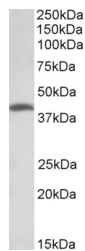
|                          |   |
|--------------------------|---|
| <b>Product Type</b>      | Primary antibodies  |
| <b>Short Description</b> | Goat polyclonal antibody anti-THNSL2 (192-204) is suitable for use in ELISA, Western Blot and Immunofluorescence research applications. |
| <b>Applications</b>      | Pep-ELISA, WB, IF   |
| <b>Host/Source</b>       | Goat  |
| <b>Reactivity</b>        | Human, Cow  |

### PRODUCT PROPERTIES

|                            |   |
|----------------------------|---|
| <b>Clonality</b>           | Polyclonal  |
| <b>Clone ID</b>            |   |
| <b>Concentration</b>       | 0.5 mg/mL   |
| <b>Conjugation</b>         | Unconjugated  |
| <b>Purification</b>        | Purified from goat serum by ammonium sulphate precipitation followed by antigen affinity chromatography using the immunizing peptide.       |
| <b>Dilution Range</b>      | WB-1-3µg/ml<br>IHC-5µg/ml   |
| <b>Formulation</b>         | ELISA-antibody detection limit dilution 1:128000.<br>0.5 mg/ml in Tris saline, 0.02% sodium azide, pH7.3 with 0.5% bovine serum albumin. NA |
| <b>Isotype</b>             | IgG   |
| <b>Storage Instruction</b> | Store at -20 on receipt and minimise freeze-thaw cycles.  |

### TARGET INFORMATION

|                           |   |
|---------------------------|---|
| <b>Gene ID</b>            | 55258   |
| <b>Gene Symbol</b>        | THNSL2  |
| <b>Uniprot ID</b>         | THNS2_HUMAN   |
| <b>Immunogen</b>          |   |
| <b>Immunogen Region</b>   | 192-204   |
| <b>Specificity</b>        | This antibody is expected to recognize all reported isoforms (NP_060741.3; NP_001231605.1; NP_001231607.1). |
| <b>Immunogen Sequence</b> | EGNSDELDEPIKT   |



STJ72926 (2µg/ml) staining of Human Colorectal Cancer lysate (35µg protein in RIPA buffer). Detected by chemiluminescence.

This product is suitable for in-vitro studies under the RESEARCH USE ONLY [RUO] licence. This product must not be used as for diagnostic or other medical purposes.  
St John's Laboratory Ltd, Knowledge Dock Business Centre, University Way, London, E16 2RD | Tel: 0208 223 3081