

Anti-AP2A1 antibody (706-727) (STJ72920)

STJ72920

GENERAL INFORMATION

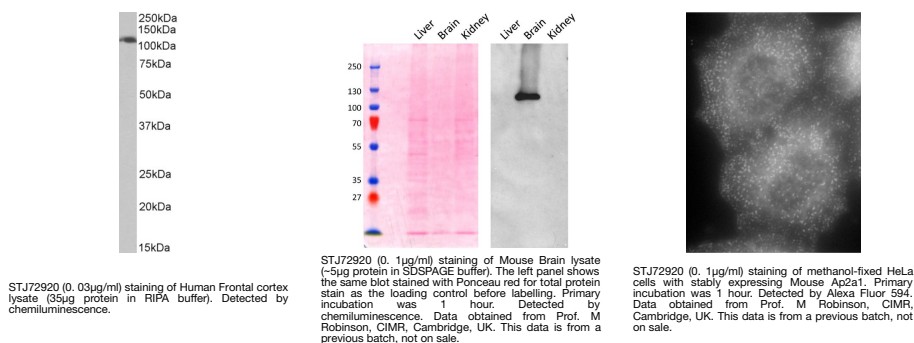
Product Type	Primary antibodies
Short Description	Goat polyclonal antibody anti-AP2A1 (706-727) is suitable for use in ELISA, Immunofluorescence and Immunohistochemistry research applications.
Applications	Pep-ELISA, IF, IHC
Host/Source	Goat
Reactivity	Human, Mouse, Rat, Pig, Cow

PRODUCT PROPERTIES

Clonality	Polyclonal
Clone ID	
Concentration	0.5 mg/mL
Conjugation	Unconjugated
Purification	Purified from goat serum by ammonium sulphate precipitation followed by antigen affinity chromatography using the immunizing peptide.
Dilution Range	WB-0.03-0.1µg/ml ELISA-antibody detection limit dilution 1:128000.
Formulation	0.5 mg/ml in Tris saline, 0.02% sodium azide, pH7.3 with 0.5% bovine serum albumin. NA
Isotype	IgG
Storage	Store at -20 on receipt and minimise freeze-thaw cycles.
Instruction	

TARGET INFORMATION

Gene ID	160
Gene Symbol	AP2A1
Uniprot ID	AP2A1_HUMAN
Immunogen	
Immunogen Region	706-727
Specificity	This antibody is expected to recognize reported isoform 1 (NP_055018.2) only.
Immunogen Sequence	ELEPPAPESPMALLADPAPAAD



This product is suitable for in-vitro studies under the RESEARCH USE ONLY [RUO] licence. This product must not be used as for diagnostic or other medical purposes.
St John's Laboratory Ltd, Knowledge Dock Business Centre, University Way, London, E16 2RD | Tel: 0208 223 3081