

## Anti-betaCstF-64 variant 1/betaCstF-64 variant 3-Mouse antibody (Internal) (STJ72911)

STJ72911

### GENERAL INFORMATION

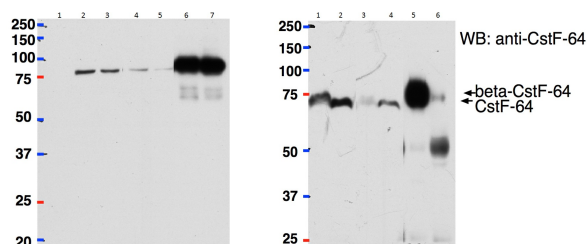
<b>Product Type</b>	Primary antibodies
<b>Short Description</b>	Goat polyclonal antibody anti-betaCstF-64 variant 1/betaCstF-64 variant 3-Mouse (Internal) is suitable for use in ELISA, Western Blot and Immunohistochemistry research applications.
<b>Applications</b>	Pep-ELISA, WB, IHC
<b>Host/Source</b>	Goat
<b>Reactivity</b>	Mouse

### PRODUCT PROPERTIES

<b>Clonality</b>	Polyclonal
<b>Clone ID</b>	
<b>Concentration</b>	0.5 mg/mL
<b>Conjugation</b>	Unconjugated
<b>Purification</b>	Purified from goat serum by ammonium sulphate precipitation followed by antigen affinity chromatography using the immunizing peptide.
<b>Dilution Range</b>	IHC-5µg/ml ELISA-antibody detection limit dilution 1:128000.
<b>Formulation</b>	0.5 mg/ml in Tris saline, 0.02% sodium azide, pH7.3 with 0.5% bovine serum albumin. NA
<b>Isotype</b>	IgG
<b>Storage Instruction</b>	Store at -20 on receipt and minimise freeze-thaw cycles.

### TARGET INFORMATION

<b>Gene ID</b>	
<b>Gene Symbol</b>	
<b>Uniprot ID</b>	
<b>Immunogen</b>	Internal
<b>Region</b>	
<b>Specificity</b>	This antibody recognizes mouse variants 1 and 3 of the reported beta isoform (ACF05702.1; ACF05700.1).
<b>Immunogen Sequence</b>	PASIERVQQQRT



HeLa lysate either in RIPA buffer (lanes 1, 2, 4, 6) or TX100 buffer (lanes 3, 5, 7) overexpressing Mouse βCstF-64 (DYKDDDDK tagged) immunoprecipitated using STJ72911 (2µg) with Protein G-coated magnetic beads in lanes 6 and 7 and probed with anti-DYKDDDDK (1/1000). Mock-transfected HeLa in Lane 1. A 1/40th part of the lysate was loaded in lanes 2 and 3 before IP and in lanes 4 and 5 after IP. Primary incubations were for 1 hour. Detected by chemiluminescence. Data obtained from Dr. P. Grozdanov, Texas Tech University Health Sciences Center, USA.

STJ72911 (2µg) used to pull down βCstF-64 from Mouse Brain (lane 5) lysate (500µg protein) while it cannot pull down CstF-64 from Mouse Liver (lane 6) lysate (500µg protein) using Protein G-coated magnetic beads. A 1/40th part of the lysates were loaded in lanes 1 (Brain) and 2 (Liver) before IP and in lanes 3 (Brain) and 4 (Liver) after IP. Western blot probed with mouse anti-βCstF-64/CstF-64 antibody and detected by chemiluminescence. Data obtained from Dr. P. Grozdanov, Texas Tech University Health Sciences Center, USA.

This product is suitable for in-vitro studies under the RESEARCH USE ONLY [RUO] licence. This product must not be used as for diagnostic or other medical purposes.

St John's Laboratory Ltd, Knowledge Dock Business Centre, University Way, London, E16 2RD | Tel: 0208 223 3081