

Anti-FGF13-Isoform 1 antibody (Internal) (STJ72910)

STJ72910

GENERAL INFORMATION

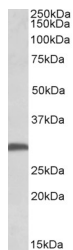
Product Type	Primary antibodies
Short Description	Goat polyclonal antibody anti-FGF13-Isoform 1 (Internal) is suitable for use in ELISA and Western Blot research applications.
Applications	Pep-ELISA, WB
Host/Source	Goat
Reactivity	Human, Mouse, Dog, Pig, Cow

PRODUCT PROPERTIES

Clonality	Polyclonal
Clone ID	
Concentration	0.5 mg/mL
Conjugation	Unconjugated
Purification	Purified from goat serum by ammonium sulphate precipitation followed by antigen affinity chromatography using the immunizing peptide.
Dilution Range	WB-0.3-1µg/ml ELISA-antibody detection limit dilution 1:32000.
Formulation	0.5 mg/ml in Tris saline, 0.02% sodium azide, pH7.3 with 0.5% bovine serum albumin. NA
Isotype	IgG
Storage	Store at-20 on receipt and minimise freeze-thaw cycles.
Instruction	

TARGET INFORMATION

Gene ID	2258
Gene Symbol	FGF13
Uniprot ID	FGF13_HUMAN
Immunogen	
Immunogen Region	Internal
Specificity	This antibody is expected to recognize isoform 1 (NP_004105.1) only. Reported variants represent identical protein: NP_001132974.1, NP_001132973.1
Immunogen Sequence	KGKTSCDKNKLNVFS



STJ72910 (0.5µg/ml) staining of Mouse Brain lysate (35µg protein in RIPA buffer). Primary incubation was 1 hour. Detected by chemiluminescence.