

Anti-cathepsin C/DPP1 antibody (238-252) (STJ72905)

STJ72905

GENERAL INFORMATION

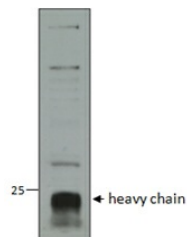
Product Type	Primary antibodies
Short Description	Goat polyclonal antibody anti-cathepsin C/DPP1 (238-252) is suitable for use in ELISA and Western Blot research applications.
Applications	Pep-ELISA, WB
Host/Source	Goat
Reactivity	Human

PRODUCT PROPERTIES

Clonality	Polyclonal
Clone ID	
Concentration	0.5 mg/mL
Conjugation	Unconjugated
Purification	Purified from goat serum by ammonium sulphate precipitation followed by antigen affinity chromatography using the immunizing peptide.
Dilution Range	WB-1-3µg/ml IHC-5µg/ml ELISA-antibody detection limit dilution 1:128000.
Formulation	0.5 mg/ml in Tris saline, 0.02% sodium azide, pH7.3 with 0.5% bovine serum albumin. NA
Isotype	IgG
Storage Instruction	Store at -20 on receipt and minimise freeze-thaw cycles.

TARGET INFORMATION

Gene ID	1075
Gene Symbol	CTSC
Uniprot ID	CATC_HUMAN
Immunogen	
Immunogen Region	238-252
Specificity	This antibody is expected to recognize isoform a (NP_001805.3) only.
Immunogen Sequence	RNVHGINFVSPVRNQ



STJ72905 (1µg/ml) staining of Human Neutrophils lysate (35µg protein in RIPA buffer). Data obtained from a customer. Detected by chemiluminescence.

This product is suitable for in-vitro studies under the RESEARCH USE ONLY [RUO] licence. This product must not be used as for diagnostic or other medical purposes.
St John's Laboratory Ltd, Knowledge Dock Business Centre, University Way, London, E16 2RD | Tel: 0208 223 3081