

Anti-Glycine receptor, alpha 1 antibody (Internal) (STJ72899)

STJ72899

GENERAL INFORMATION

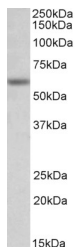
Product Type	Primary antibodies
Short Description	Goat polyclonal antibody anti-Glycine receptor, alpha 1 (Internal) is suitable for use in ELISA and Western Blot research applications.
Applications	Pep-ELISA, WB
Host/Source	Goat
Reactivity	Human, Mouse, Rat, Dog, Pig, Cow

PRODUCT PROPERTIES

Clonality	Polyclonal
Clone ID	
Concentration	0.5 mg/mL
Conjugation	Unconjugated
Purification	Purified from goat serum by ammonium sulphate precipitation followed by antigen affinity chromatography using the immunizing peptide.
Dilution Range	WB-0.3-1µg/ml IHC-5µg/ml ELISA-antibody detection limit dilution 1:128000.
Formulation	0.5 mg/ml in Tris saline, 0.02% sodium azide, pH7.3 with 0.5% bovine serum albumin. NA
Isotype	IgG
Storage Instruction	Store at -20 on receipt and minimise freeze-thaw cycles.

TARGET INFORMATION

Gene ID	2741
Gene Symbol	GLRA1
Uniprot ID	GLRA1_HUMAN
Immunogen	
Immunogen Region	Internal
Specificity	The immunizing peptide represents part of the cytoplasmic domain. The antibody is not expected to cross-react with other glycine receptor alpha proteins.
Immunogen Sequence	CLQAKDGISVKGAN



STJ72899 (0.3µg/ml) staining of Mouse Testis lysate (35µg protein in RIPA buffer). Detected by chemiluminescence.