

Anti-ENC1 antibody (Internal) (STJ72896)

STJ72896

GENERAL INFORMATION

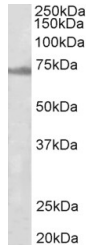
Product Type	Primary antibodies
Short Description	Goat polyclonal antibody anti-ENC1 (Internal) is suitable for use in Pep_ELISA research applications.
Applications	Pep_ELISA
Host/Source	Goat
Reactivity	Human, Mouse, Rat, Dog, Pig, Cow

PRODUCT PROPERTIES

Clonality	Polyclonal
Clone ID	
Concentration	0.5 mg/mL
Conjugation	Unconjugated
Purification	Purified from goat serum by ammonium sulphate precipitation followed by antigen affinity chromatography using the immunizing peptide.
Dilution Range	WB-1-3µg/ml IHC-5µg/ml ELISA-antibody detection limit dilution 1:128000.
Formulation	0.5 mg/ml in Tris saline, 0.02% sodium azide, pH7.3 with 0.5% bovine serum albumin. NA
Isotype	IgG
Storage Instruction	Store at -20 on receipt and minimise freeze-thaw cycles.

TARGET INFORMATION

Gene ID	8507
Gene Symbol	ENC1
Uniprot ID	ENC1_HUMAN
Immunogen Region	Internal
Specificity	This antibody is expected to recognize both reported isoforms (NP_003624.1; NP_001243505.1). Reported variants represent identical protein: NP_001243503.1, NP_001243504.1, NP_003624.1.
Immunogen Sequence	TSVSHDKLPKVQC



STJ72896 (1µg/ml) staining of Rat Ovary lysate (35µg protein in RIPA buffer). Detected by chemiluminescence.

This product is suitable for in-vitro studies under the RESEARCH USE ONLY [RUO] licence. This product must not be used as for diagnostic or other medical purposes.
St John's Laboratory Ltd, Knowledge Dock Business Centre, University Way, London, E16 2RD | Tel: 0208 223 3081