

## Anti-GLP1R antibody (Internal) (STJ72860)

STJ72860

### GENERAL INFORMATION

<b>Product Type</b>	Primary antibodies
<b>Short Description</b>	Goat polyclonal antibody anti-GLP1R (Internal) is suitable for use in ELISA and Western Blot research applications.
<b>Applications</b>	Pep-ELISA, WB
<b>Host/Source</b>	Goat
<b>Reactivity</b>	Human, Mouse, Rat, Dog, Pig, Cow

### PRODUCT PROPERTIES

<b>Clonality</b>	Polyclonal
<b>Clone ID</b>	
<b>Concentration</b>	0.5 mg/mL
<b>Conjugation</b>	Unconjugated
<b>Purification</b>	Purified from goat serum by ammonium sulphate precipitation followed by antigen affinity chromatography using the immunizing peptide.
<b>Dilution Range</b>	IF-Strong expression of the protein seen in the membranes of HeLa cells. 10µg/ml FC-Flow cytometric analysis of HeLa cells. 10ug/ml ELISA-antibody detection limit dilution 1:128000.
<b>Formulation</b>	0.5 mg/ml in Tris saline, 0.02% sodium azide, pH7.3 with 0.5% bovine serum albumin. NA
<b>Isotype</b>	IgG
<b>Storage Instruction</b>	Store at-20 on receipt and minimise freeze-thaw cycles.

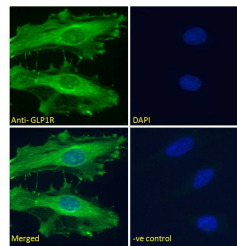
### TARGET INFORMATION

<b>Gene ID</b>	2740
<b>Gene Symbol</b>	GLP1R
<b>Uniprot ID</b>	GLP1R_HUMAN
<b>Immunogen</b>	
<b>Immunogen Region</b>	Internal
<b>Specificity</b>	The immunizing peptide represents part of an extracellular region.
<b>Immunogen Sequence</b>	QHQWDGLLSYQD

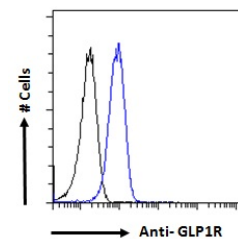


STJ72860 (1µg/ml) staining of Human Hippocampus lysate (35µg protein in RIPA buffer). Detected by chemiluminescence.

STJ72860 (1µg/ml) staining of Rat (A) and (0. 1ug/ml) Pig (B) Brain lysate (35µg protein in RIPA buffer). Detected by chemiluminescence.



STJ72860 Immunofluorescence analysis of paraformaldehyde fixed HeLa cells, permeabilized with 0. 15% Triton. Primary incubation 1hr (10ug/ml) followed by Alexa Fluor 488 secondary antibody (2ug/ml) , showing membrane staining. The nuclear stain is DAPI (blue). Negative control: Unimmunized goat IgG (10ug/ml) followed by Alexa Fluor 488 secondary antibody (2ug/ml).



STJ72860 Flow cytometric analysis of paraformaldehyde fixed HeLa cells (blue line) , permeabilized with 0. 5% Triton. Primary incubation 1hr (10ug/ml) followed by Alexa Fluor 488 secondary antibody (1ug/ml). IgG control: Unimmunized goat IgG (10ug/ml) followed by Alexa Fluor 488 secondary antibody.

This product is suitable for in-vitro studies under the RESEARCH USE ONLY [RUO] licence. This product must not be used as for diagnostic or other medical purposes.

St John's Laboratory Ltd, Knowledge Dock Business Centre, University Way, London, E16 2RD | Tel: 0208 223 3081