

## Anti-Lamin B1-Isoform 1 antibody (Internal) (STJ72852)

STJ72852

### GENERAL INFORMATION

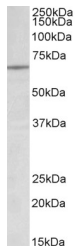
|                          |  |
|--------------------------|--|
| <b>Product Type</b>      | Primary antibodies   |
| <b>Short Description</b> | Goat polyclonal antibody anti-Lamin B1-Isoform 1 (Internal) is suitable for use in ELISA and Western Blot research applications. |
| <b>Applications</b>      | Pep-ELISA, WB  |
| <b>Host/Source</b>       | Goat   |
| <b>Reactivity</b>        | Human, Pig, Cow  |

### PRODUCT PROPERTIES

|                            |   |
|----------------------------|---|
| <b>Clonality</b>           | Polyclonal  |
| <b>Clone ID</b>            |   |
| <b>Concentration</b>       | 0.5 mg/mL   |
| <b>Conjugation</b>         | Unconjugated  |
| <b>Purification</b>        | Purified from goat serum by ammonium sulphate precipitation followed by antigen affinity chromatography using the immunizing peptide. |
| <b>Dilution Range</b>      | WB-0.1-0.3µg/ml<br>ELISA-antibody detection limit dilution 1:128000.  |
| <b>Formulation</b>         | 0.5 mg/ml in Tris saline, 0.02% sodium azide, pH7.3 with 0.5% bovine serum albumin. NA  |
| <b>Isotype</b>             | IgG   |
| <b>Storage Instruction</b> | Store at -20 on receipt and minimise freeze-thaw cycles.  |

### TARGET INFORMATION

|                           |  |
|---------------------------|--|
| <b>Gene ID</b>            | 4001   |
| <b>Gene Symbol</b>        | LMNB1  |
| <b>Uniprot ID</b>         | LMNB1_HUMAN  |
| <b>Immunogen</b>          |  |
| <b>Immunogen Region</b>   | Internal   |
| <b>Specificity</b>        | This antibody is expected to recognize isoform 1 (NP_005564.1) only. |
| <b>Immunogen Sequence</b> | KESDLNGAQIKLRE   |



STJ72852 (0.2µg/ml) staining of Jurkat lysate (35µg protein in RIPA buffer). Primary incubation was 1 hour. Detected by chemiluminescence.

This product is suitable for in-vitro studies under the RESEARCH USE ONLY [RUO] licence. This product must not be used as for diagnostic or other medical purposes.  
St John's Laboratory Ltd, Knowledge Dock Business Centre, University Way, London, E16 2RD | Tel: 0208 223 3081