

Anti-CHRM2 antibody (352-364) (STJ72844)

STJ72844

GENERAL INFORMATION

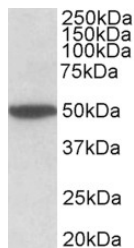
Product Type	Primary antibodies
Short Description	Goat polyclonal antibody anti-CHRM2 (352-364) is suitable for use in ELISA research applications.
Applications	Pep-ELISA
Host/Source	Goat
Reactivity	Human, Mouse, Dog, Pig, Cow

PRODUCT PROPERTIES

Clonality	Polyclonal
Clone ID	
Concentration	0.5 mg/mL
Conjugation	Unconjugated
Purification	Purified from goat serum by ammonium sulphate precipitation followed by antigen affinity chromatography using the immunizing peptide.
Dilution Range	WB-0.5-2µg/ml ELISA-antibody detection limit dilution 1:128000.
Formulation	0.5 mg/ml in Tris saline, 0.02% sodium azide, pH7.3 with 0.5% bovine serum albumin. NA
Isotype	IgG
Storage Instruction	Store at -20 on receipt and minimise freeze-thaw cycles.

TARGET INFORMATION

Gene ID	1129
Gene Symbol	CHRM2
Uniprot ID	ACM2_HUMAN
Immunogen	
Immunogen Region	352-364
Specificity	Reported variants represent identical protein: NP_001006628.1, NP_001006633.1, NP_001006627.1, NP_000730.1, NP_001006629.1, NP_001006630.1, NP_001006631.1, NP_001006632.1.
Immunogen Sequence	QNGDEKQNVARK



STJ72844 (2µg/ml) staining of Mouse Brain lysate (35µg protein in RIPA buffer). Primary incubation was 1 hour. Detected by chemiluminescence.

This product is suitable for in-vitro studies under the RESEARCH USE ONLY [RUO] licence. This product must not be used as for diagnostic or other medical purposes.
St John's Laboratory Ltd, Knowledge Dock Business Centre, University Way, London, E16 2RD | Tel: 0208 223 3081