

Anti-ZNRF1-Mouse antibody (Internal) (STJ72828)

STJ72828

GENERAL INFORMATION

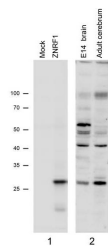
Product Type	Primary antibodies
Short Description	Goat polyclonal antibody anti-ZNRF1-Mouse (Internal) is suitable for use in ELISA and Western Blot research applications.
Applications	Pep-ELISA, WB
Host/Source	Goat
Reactivity	Human, Mouse, Rat, Dog, Pig, Cow

PRODUCT PROPERTIES

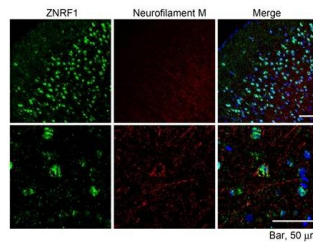
Clonality	Polyclonal
Clone ID	
Concentration	0.5 mg/mL
Conjugation	Unconjugated
Purification	Purified from goat serum by ammonium sulphate precipitation followed by antigen affinity chromatography using the immunizing peptide.
Dilution Range	IHC-Recommended concentration, 10µg/ml ELISA-antibody detection limit dilution 1:32000.
Formulation	0.5 mg/ml in Tris saline, 0.02% sodium azide, pH7.3 with 0.5% bovine serum albumin. NA
Isotype	IgG
Storage	Store at -20 on receipt and minimise freeze-thaw cycles.
Instruction	

TARGET INFORMATION

Gene ID	84937
Gene Symbol	ZNRF1
Uniprot ID	ZNRF1_HUMAN
Immunogen	
Region	Internal
Specificity	This antibody is expected to recognize reported isoforms a and b (NP_573469.1; NP_001162093.1). Reported variants represent identical protein: NP_001162092.1, NP_573469.1
Immunogen Sequence	SDSTYAHGNGYQET



N2a overexpressing Mouse Znrfl1 (mock transfection in first lane) and probed with STJ72828 (1µg/ml), also staining of Mouse Brain lysates Embryo E14 and adult cerebellum. Primary incubation was 1 hour. Detected by chemiluminescence.



STJ72828 (10µg/ml) staining of paraffin embedded Mouse Cerebral Cortex. Microwaved antigen retrieval with citrate buffer pH 6, streptavidin-Alexa 488-staining after biotinylated anti-goat secondary. The Neurofilament M was labeled by Millipore AB1987 (1:100).

This product is suitable for in-vitro studies under the RESEARCH USE ONLY [RUO] licence. This product must not be used as for diagnostic or other medical purposes.
St John's Laboratory Ltd, Knowledge Dock Business Centre, University Way, London, E16 2RD | Tel: 0208 223 3081