

Anti-AIMP1/SCYE1 antibody (137-149) (STJ72797)

STJ72797

GENERAL INFORMATION

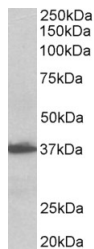
Product Type	Primary antibodies
Short Description	Goat polyclonal antibody anti-AIMP1/SCYE1 (137-149) is suitable for use in ELISA research applications.
Applications	Pep-ELISA
Host/Source	Goat
Reactivity	Human, Dog, Pig

PRODUCT PROPERTIES

Clonality	Polyclonal
Clone ID	
Concentration	0.5 mg/mL
Conjugation	Unconjugated
Purification	Purified from goat serum by ammonium sulphate precipitation followed by antigen affinity chromatography using the immunizing peptide.
Dilution Range	WB-0.1-0.3µg/ml IHC-Recommended concentration, 5-10µg/ml ELISA-antibody detection limit dilution 1:32000.
Formulation	0.5 mg/ml in Tris saline, 0.02% sodium azide, pH7.3 with 0.5% bovine serum albumin. NA
Isotype	IgG
Storage Instruction	Store at -20 on receipt and minimise freeze-thaw cycles.

TARGET INFORMATION

Gene ID	9255
Gene Symbol	AIMP1
Uniprot ID	AIMP1_HUMAN
Immunogen	
Immunogen Region	137-149
Specificity	This antibody is expected to recognize both reported isoforms (NP_004748.2; NP_001135888.1). Reported variants represent identical protein: NP_004748.2, NP_001135887.1
Immunogen Sequence	KQQSIAGSADSKP



STJ72797 (0.1µg/ml) staining of Human Lymph Node lysate (35µg protein in RIPA buffer). Primary incubation was 1 hour. Detected by chemiluminescence.