

Anti-GEM antibody (34-46) (STJ72787)

STJ72787

GENERAL INFORMATION

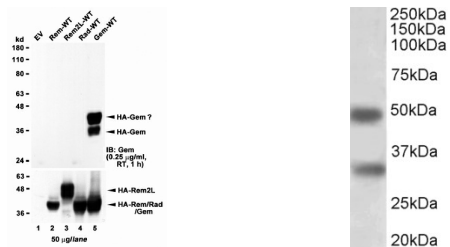
Product Type	Primary antibodies
Short Description	Goat polyclonal antibody anti-GEM (34-46) is suitable for use in ELISA, Immunofluorescence and Flow Cytometry research applications.
Applications	Pep-ELISA, IF, FC
Host/Source	Goat
Reactivity	Human

PRODUCT PROPERTIES

Clonality	Polyclonal
Clone ID	
Concentration	0.5 mg/mL
Conjugation	Unconjugated
Purification	Purified from goat serum by ammonium sulphate precipitation followed by antigen affinity chromatography using the immunizing peptide.
Dilution Range	ELISA-antibody detection limit dilution 1:16000.
Formulation	0.5 mg/ml in Tris saline, 0.02% sodium azide, pH7.3 with 0.5% bovine serum albumin. NA
Isotype	IgG
Storage Instruction	Store at -20 on receipt and minimise freeze-thaw cycles.

TARGET INFORMATION

Gene ID	2669
Gene Symbol	GEM
Uniprot ID	GEM_HUMAN
Immunogen	
Immunogen Region	34-46
Specificity	Reported variants represent identical protein: NP_005252.1, NP_859053.1
Immunogen Sequence	QKEPHQYSHNRH



HEK293 lysate overexpressing full-length Human GEM (HA-tagged), mock-transfected HEK293 (EV) and HEK293 transiently expressing GEM-related genes (Rem, Rem2L and Rad) probed with STJ72787 (1 μ g/ml). The same lysates probed with anti-HA tag antibody in the lower panel.

STJ72787 (1 μ g/ml) staining of Human Spleen lysate (35 μ g protein in RIPA buffer). Primary incubation was 1 hour. Detected by chemiluminescence.

This product is suitable for in-vitro studies under the RESEARCH USE ONLY [RUO] licence. This product must not be used as for diagnostic or other medical purposes.

St John's Laboratory Ltd, Knowledge Dock Business Centre, University Way, London, E16 2RD | Tel: 0208 223 3081