

Anti-SFTPA1/SFTPA2 antibody (102-115) (STJ72743)

STJ72743

GENERAL INFORMATION

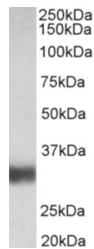
Product Type	Primary antibodies
Short Description	Goat polyclonal antibody anti-SFTPA1/SFTPA2 (102-115) is suitable for use in ELISA research applications.
Applications	Pep-ELISA
Host/Source	Goat
Reactivity	Human, Cow

PRODUCT PROPERTIES

Clonality	Polyclonal
Clone ID	
Concentration	0.5 mg/mL
Conjugation	Unconjugated
Purification	Purified from goat serum by ammonium sulphate precipitation followed by antigen affinity chromatography using the immunizing peptide.
Dilution Range	WB-0.01-0.03µg/ml IHC-5µg/ml ELISA-antibody detection limit dilution 1:32000.
Formulation	0.5 mg/ml in Tris saline, 0.02% sodium azide, pH7.3 with 0.5% bovine serum albumin. NA
Isotype	IgG
Storage Instruction	Store at -20 on receipt and minimise freeze-thaw cycles.

TARGET INFORMATION

Gene ID	653509
Gene Symbol	SFTPA1
Uniprot ID	SFTA1_HUMAN
Immunogen	
Immunogen Region	102-115
Specificity	This antibody is expected to recognize all the reported isoforms of A1 (NP_005402.3; NP_001087239.2; NP_001158117.1; NP_001158118.1) and A2 (NP_001092138.1) , Reported variants represent identical protein: NP_001158116.1, NP_005402.3, NP_001158119.1
Immunogen Sequence	HLDEELQATLHDFR



STJ72743 (0.01µg/ml) staining of Human Lung lysate (35µg protein in RIPA buffer). Primary incubation was 1 hour. Detected by chemiluminescence.

This product is suitable for in-vitro studies under the RESEARCH USE ONLY [RUO] licence. This product must not be used as for diagnostic or other medical purposes.
St John's Laboratory Ltd, Knowledge Dock Business Centre, University Way, London, E16 2RD | Tel: 0208 223 3081