

## Anti-Tgm6-Mouse antibody (C-Term) (STJ72664)

STJ72664

### GENERAL INFORMATION

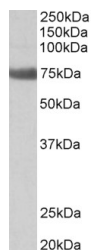
<b>Product Type</b>	Primary antibodies
<b>Short Description</b>	Goat polyclonal antibody anti-Tgm6-Mouse (C-Term) is suitable for use in ELISA and Western Blot research applications.
<b>Applications</b>	Pep-ELISA, WB
<b>Host/Source</b>	Goat
<b>Reactivity</b>	Human, Mouse, Rat, Dog, Pig, Cow

### PRODUCT PROPERTIES

<b>Clonality</b>	Polyclonal
<b>Clone ID</b>	
<b>Concentration</b>	0.5 mg/mL
<b>Conjugation</b>	Unconjugated
<b>Purification</b>	Purified from goat serum by ammonium sulphate precipitation followed by antigen affinity chromatography using the immunizing peptide.
<b>Dilution Range</b>	WB-1-3µg/ml ELISA-antibody detection limit dilution 1:16000.
<b>Formulation</b>	0.5 mg/ml in Tris saline, 0.02% sodium azide, pH7.3 with 0.5% bovine serum albumin. NA
<b>Isotype</b>	IgG
<b>Storage Instruction</b>	Store at -20 on receipt and minimise freeze-thaw cycles.

### TARGET INFORMATION

<b>Gene ID</b>	343641
<b>Gene Symbol</b>	TGM6
<b>Uniprot ID</b>	TGM3L_HUMAN
<b>Immunogen Region</b>	C-Term
<b>Specificity</b>	This antibody is expected to recognize both reported isoforms (NP_808394.1; NP_001276676.1). Variants NP_001276676.1, NP_001276677.1 and NP_001276678.1 represent identical protein.
<b>Immunogen Sequence</b>	DKYVDSYGRTLED



STJ72664 (2µg/ml) staining of Rat Lung lysate (35µg protein in RIPA buffer). Primary incubation was 1 hour. Detected by chemiluminescence.