

Anti-TGFBR1 antibody (50-63) (STJ72633)

STJ72633

GENERAL INFORMATION

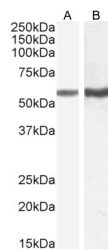
Product Type	Primary antibodies
Short Description	Goat polyclonal antibody anti-TGFBR1 (50-63) is suitable for use in ELISA, Western Blot and Immunohistochemistry research applications.
Applications	Pep-ELISA, WB, IHC
Host/Source	Goat
Reactivity	Human, Mouse, Rat, Dog, Pig, Cow

PRODUCT PROPERTIES

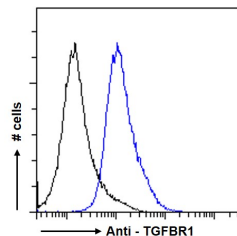
Clonality	Polyclonal
Clone ID	
Concentration	0.5 mg/mL
Conjugation	Unconjugated
Purification	Purified from goat serum by ammonium sulphate precipitation followed by antigen affinity chromatography using the immunizing peptide.
Dilution Range	WB-0.03-0.1µg/ml IHC-5µg/ml FC-Flow cytometric analysis of HeLa cells. 10ug/ml ELISA-antibody detection limit dilution 1:64000.
Formulation	0.5 mg/ml in Tris saline, 0.02% sodium azide, pH7.3 with 0.5% bovine serum albumin. NA
Isotype	IgG
Storage	Store at -20 on receipt and minimise freeze-thaw cycles.
Instruction	

TARGET INFORMATION

Gene ID	7046
Gene Symbol	TGFBR1
Uniprot ID	TGFR1_HUMAN
Immunogen	
Immunogen Region	50-63
Specificity	This antibody is expected to recognize both reported isoforms (NP_004603.1; NP_001124388.1). The immunizing peptide represents part of a potential extracellular domain.
Immunogen Sequence	TDGLCFVSVTETTD



STJ72633 (0.1µg/ml) staining of Rat Liver (A) and (0.03ug/ml) Lung (B) lysate (35µg protein in RIPA buffer). Detected by chemiluminescence.



STJ72633 Flow cytometric analysis of paraformaldehyde fixed HeLa cells (blue line) permeabilized with 0.5% Triton. Primary incubation 1hr (10ug/ml) followed by Alexa Fluor 488 secondary antibody (1ug/ml). IgG control: Unimmunized goat IgG (black line) followed by Alexa Fluor 488 secondary antibody.