

Anti-Fgf23-Mouse antibody (Internal) (STJ72630)

STJ72630

GENERAL INFORMATION

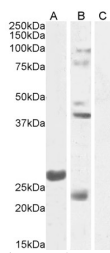
Product Type	Primary antibodies
Short Description	Goat polyclonal antibody anti-Fgf23-Mouse (Internal) is suitable for use in ELISA research applications.
Applications	Pep-ELISA
Host/Source	Goat
Reactivity	Mouse, Rat

PRODUCT PROPERTIES

Clonality	Polyclonal
Clone ID	
Concentration	0.5 mg/mL
Conjugation	Unconjugated
Purification	Purified from goat serum by ammonium sulphate precipitation followed by antigen affinity chromatography using the immunizing peptide.
Dilution Range	ELISA-antibody detection limit dilution 1:128000.
Formulation	0.5 mg/ml in Tris saline, 0.02% sodium azide, pH7.3 with 0.5% bovine serum albumin. NA
Isotype	IgG
Storage Instruction	Store at -20 on receipt and minimise freeze-thaw cycles.

TARGET INFORMATION

Gene ID	
Gene Symbol	
Uniprot ID	
Immunogen	
Immunogen Region	Internal
Specificity	
Immunogen Sequence	ENGYDVYLSQKHH



STJ72630 (1µg/ml) staining of Mouse Testes lysate 1 (A) and Testes lysate 2 (B) + peptide (C) (35µg protein in RIPA buffer). Detected by chemiluminescence.

This product is suitable for in-vitro studies under the RESEARCH USE ONLY [RUO] licence. This product must not be used as for diagnostic or other medical purposes.
St John's Laboratory Ltd, Knowledge Dock Business Centre, University Way, London, E16 2RD | Tel: 0208 223 3081