

Anti-TPH2 antibody (16-29) (STJ72617)

STJ72617

GENERAL INFORMATION

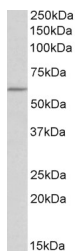
Product Type	Primary antibodies
Short Description	Goat polyclonal antibody anti-TPH2 (16-29) is suitable for use in ELISA, Western Blot and Immunohistochemistry research applications.
Applications	Pep-ELISA, WB, IHC
Host/Source	Goat
Reactivity	Human, Mouse, Rat, Dog, Pig, Cow

PRODUCT PROPERTIES

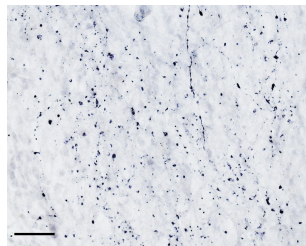
Clonality	Polyclonal
Clone ID	
Concentration	0.5 mg/mL
Conjugation	Unconjugated
Purification	Purified from goat serum by ammonium sulphate precipitation followed by antigen affinity chromatography using the immunizing peptide.
Dilution Range	WB-0.5-2µg/ml ELISA-antibody detection limit dilution 1:128000.
Formulation	0.5 mg/ml in Tris saline, 0.02% sodium azide, pH7.3 with 0.5% bovine serum albumin. NA
Isotype	IgG
Storage Instruction	Store at -20 on receipt and minimise freeze-thaw cycles.

TARGET INFORMATION

Gene ID	121278
Gene Symbol	TPH2
Uniprot ID	TPH2_HUMAN
Immunogen	
Immunogen Region	16-29
Specificity	
Immunogen Sequence	RGFSLDSAVPEEHQ



STJ72617 (0.5µg/ml) staining of HEK293 lysate (35µg protein in RIPA buffer). Detected by chemiluminescence.



STJ72617 (scale bar: 50 µm) immunostaining of TPH2 processes in cryosection of the infundibular nucleus of an immersion-fixed (4% PFA) human hypothalamus. HRP-staining with Ni-DAB, after Biotin-SP-anti-goat (IgG) method. Data obtained by Drs. Eva Rumpel and Erik Hrabovszky, Inst. Exp. Med, Budapest, Hungary.

This product is suitable for in-vitro studies under the RESEARCH USE ONLY [RUO] licence. This product must not be used as for diagnostic or other medical purposes.
 St John's Laboratory Ltd, Knowledge Dock Business Centre, University Way, London, E16 2RD | Tel: 0208 223 3081