

Anti-MTHFD1L antibody (535-538) (STJ72572)

STJ72572

GENERAL INFORMATION

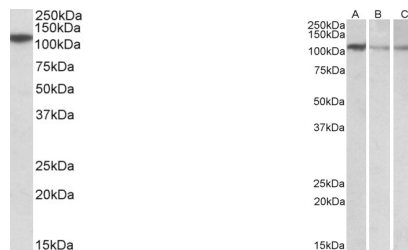
| | |
|--------------------------|--|
| Product Type | Primary antibodies |
| Short Description | Goat polyclonal antibody anti-MTHFD1L (535-538) is suitable for use in ELISA, Western Blot and Immunohistochemistry research applications. |
| Applications | Pep-ELISA, WB, IHC |
| Host/Source | Goat |
| Reactivity | Human, Mouse, Rat, Dog, Pig, Cow |

PRODUCT PROPERTIES

| | |
|----------------------------|---|
| Clonality | Polyclonal |
| Clone ID | |
| Concentration | 0.5 mg/mL |
| Conjugation | Unconjugated |
| Purification | Purified from goat serum by ammonium sulphate precipitation followed by antigen affinity chromatography using the immunizing peptide. |
| Dilution Range | WB-0.1-0.3µg/ml IHC-5µg/ml ELISA-antibody detection limit dilution 1:32000. |
| Formulation | 0.5 mg/ml in Tris saline, 0.02% sodium azide, pH7.3 with 0.5% bovine serum albumin. NA |
| Isotype | IgG |
| Storage Instruction | Store at -20 on receipt and minimise freeze-thaw cycles. |

TARGET INFORMATION

| | |
|---------------------------|----------------|
| Gene ID | 25902 |
| Gene Symbol | MTHFD1L |
| Uniprot ID | C1TM_HUMAN |
| Immunogen | |
| Immunogen Region | 535-538 |
| Specificity | |
| Immunogen Sequence | DTNDRFLRKITIGQ |



STJ72572 (0.1µg/ml) staining of Human Cerebellum lysate (35µg protein in RIPA buffer). Detected by chemiluminescence.

STJ72572 (0.1µg/ml) staining of NIH-3T3 (A), Mouse Brain (B) and Rat Brain (C) lysates (35µg protein in RIPA buffer). Detected by chemiluminescence.

This product is suitable for in-vitro studies under the RESEARCH USE ONLY [RUO] licence. This product must not be used as for diagnostic or other medical purposes.
St John's Laboratory Ltd, Knowledge Dock Business Centre, University Way, London, E16 2RD | Tel: 0208 223 3081