

Anti-MKRN1 antibody (105-118) (STJ72567)

STJ72567

GENERAL INFORMATION

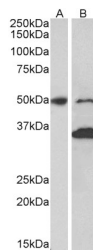
Product Type	Primary antibodies
Short Description	Goat polyclonal antibody anti-MKRN1 (105-118) is suitable for use in ELISA and Western Blot research applications.
Applications	Pep-ELISA, WB
Host/Source	Goat
Reactivity	Human, Mouse, Dog, Pig, Cow

PRODUCT PROPERTIES

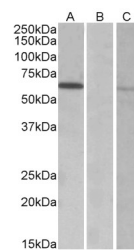
Clonality	Polyclonal
Clone ID	
Concentration	0.5 mg/mL
Conjugation	Unconjugated
Purification	Purified from goat serum by ammonium sulphate precipitation followed by antigen affinity chromatography using the immunizing peptide.
Dilution Range	ELISA-antibody detection limit dilution 1:64000.
Formulation	0.5 mg/ml in Tris saline, 0.02% sodium azide, pH7.3 with 0.5% bovine serum albumin. NA
Isotype	IgG
Storage Instruction	Store at -20 on receipt and minimise freeze-thaw cycles.

TARGET INFORMATION

Gene ID	23608
Gene Symbol	MKRN1
Uniprot ID	MKRN1_HUMAN
Immunogen	
Immunogen Region	105-118
Specificity	This antibody is expected to recognize both reported isoforms (NP_038474.2; NP_001138597.1).
Immunogen Sequence	RYEHSKPLKQEEAT



STJ72567 (1µg/ml) staining of Mouse fetal (A) and adult (B) Brain lysates (35µg protein in RIPA buffer). Primary incubation was 1 hour. Detected by chemiluminescence.



HEK293 lysate (10µg protein in RIPA buffer) over-expressing Human MKRN1 with DYKDDDDK tag probed with STJ72567 (0.3µg/ml) in Lane A and probed with anti-DYKDDDDK Tag (1/1000) in lane B. Mock-transfected HEK293 probed with STJ72567 (1mg/ml) in Lane C. Primary incubations were for 1 hour. Detected by chemiluminescence.

This product is suitable for in-vitro studies under the RESEARCH USE ONLY [RUO] licence. This product must not be used as for diagnostic or other medical purposes.
 St John's Laboratory Ltd, Knowledge Dock Business Centre, University Way, London, E16 2RD | Tel: 0208 223 3081