

Anti-PIM2 antibody (23-36) (STJ72565)

STJ72565

GENERAL INFORMATION

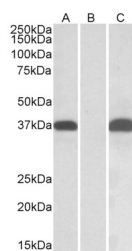
Product Type	Primary antibodies
Short Description	Goat polyclonal antibody anti-PIM2 (23-36) is suitable for use in ELISA, Western Blot, Immunoprecipitation and Immunohistochemistry research applications.
Applications	Pep-ELISA, WB, IP, IHC
Host/Source	Goat
Reactivity	Human, Mouse, Rat, Cow

PRODUCT PROPERTIES

Clonality	Polyclonal
Clone ID	
Concentration	0.5 mg/mL
Conjugation	Unconjugated
Purification	Purified from goat serum by ammonium sulphate precipitation followed by antigen affinity chromatography using the immunizing peptide.
Dilution Range	IHC-5µg/ml ELISA-antibody detection limit dilution 1:64000.
Formulation	0.5 mg/ml in Tris saline, 0.02% sodium azide, pH7.3 with 0.5% bovine serum albumin. NA
Isotype	IgG
Storage Instruction	Store at -20 on receipt and minimise freeze-thaw cycles.

TARGET INFORMATION

Gene ID	11040
Gene Symbol	PIM2
Uniprot ID	PIM2_HUMAN
Immunogen	
Immunogen Region	23-36
Specificity	
Immunogen Sequence	KDREAFEAEYRLGP



HEK293 lysate (10µg protein in RIPA buffer) overexpressing Human PIM2 with C-terminal MYC tag probed with STJ72565 (0.1µg/ml) in Lane A and probed with anti-MYC Tag (1/1000) in lane C. Mock-transfected HEK293 probed with STJ72565 (0.1µg/ml) in Lane B. Primary incubations were for 1 hour. Detected by chemiluminescence.

This product is suitable for in-vitro studies under the RESEARCH USE ONLY [RUO] licence. This product must not be used as for diagnostic or other medical purposes.
St John's Laboratory Ltd, Knowledge Dock Business Centre, University Way, London, E16 2RD | Tel: 0208 223 3081