

Anti-PTCH1 antibody (266-280) (STJ72564)

STJ72564

GENERAL INFORMATION

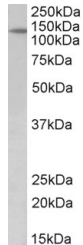
Product Type	Primary antibodies
Short Description	Goat polyclonal antibody anti-PTCH1 (266-280) is suitable for use in ELISA and Western Blot research applications.
Applications	Pep-ELISA, WB
Host/Source	Goat
Reactivity	Human, Mouse, Rat, Dog, Cow

PRODUCT PROPERTIES

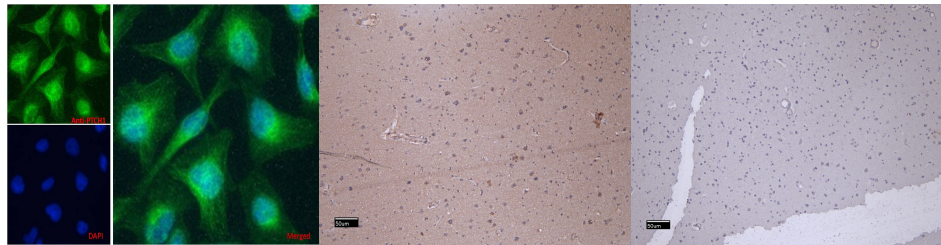
Clonality	Polyclonal
Clone ID	
Concentration	0.5 mg/mL
Conjugation	Unconjugated
Purification	Purified from goat serum by ammonium sulphate precipitation followed by antigen affinity chromatography using the immunizing peptide.
Dilution Range	WB-1-3µg/ml IF-Strong expression of the protein seen in the cytoplasm of HeLa cells. 5µg/ml ELISA-antibody detection limit dilution 1:32000.
Formulation	0.5 mg/ml in Tris saline, 0.02% sodium azide, pH7.3 with 0.5% bovine serum albumin. NA
Isotype	IgG
Storage Instruction	Store at -20 on receipt and minimise freeze-thaw cycles.

TARGET INFORMATION

Gene ID	5727
Gene Symbol	PTCH1
Uniprot ID	PTC1_HUMAN
Immunogen	266-280
Region	
Specificity	This antibody is expected to recognize all reported isoforms (NP_000255.2; NP_001077072.1; NP_001077071.1; NP_001077073.1). Reported variants represent identical protein: NP_001077075.1, NP_001077074.1, NP_001077073.1, NP_001077076.1
Immunogen Sequence	EELKKINYQVDSWEE



STJ72564 (2µg/ml) staining of Mouse fetal Kidney lysate (35µg protein in RIPA buffer). Detected by chemiluminescence.



STJ72564 Immunofluorescence analysis of paraformaldehyde fixed HeLa cells, permeabilized with 0.15% Triton. Primary incubation 1hr (5µg/ml) followed by Alexa Fluor 488 secondary antibody (1µg/ml) showing cytoplasmic and Golgi apparatus staining. The nuclear stain is DAPI (blue).

STJ72564 (8µg/ml) staining of paraffin embedded Human Cortex. Heat induced antigen retrieval with citrate buffer pH 6, HRP-staining.

STJ72564 Negative Control showing staining of paraffin embedded Human Cortex, with no primary antibody.

This product is suitable for in-vitro studies under the RESEARCH USE ONLY [RUO] licence. This product must not be used as for diagnostic or other medical purposes.
St John's Laboratory Ltd, Knowledge Dock Business Centre, University Way, London, E16 2RD | Tel: 0208 223 3081