

## Anti-CBARA1 antibody (113-126) (STJ72551)

STJ72551

### GENERAL INFORMATION

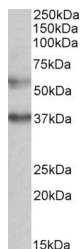
<b>Product Type</b>	Primary antibodies
<b>Short Description</b>	Goat polyclonal antibody anti-CBARA1 (113-126) is suitable for use in ELISA, Western Blot, Immunohistochemistry and Immunofluorescence research applications.
<b>Applications</b>	Pep-ELISA, WB, IHC, IF
<b>Host/Source</b>	Goat
<b>Reactivity</b>	Human, Mouse, Rat, Dog, Pig, Cow

### PRODUCT PROPERTIES

<b>Clonality</b>	Polyclonal
<b>Clone ID</b>	
<b>Concentration</b>	0.5 mg/mL
<b>Conjugation</b>	Unconjugated
<b>Purification</b>	Purified from goat serum by ammonium sulphate precipitation followed by antigen affinity chromatography using the immunizing peptide.
<b>Dilution Range</b>	WB-0.5-2µg/ml IHC-3.75µg/ml ELISA-antibody detection limit dilution 1:32000.
<b>Formulation</b>	0.5 mg/ml in Tris saline, 0.02% sodium azide, pH7.3 with 0.5% bovine serum albumin. NA
<b>Isotype</b>	IgG
<b>Storage Instruction</b>	Store at -20 on receipt and minimise freeze-thaw cycles.

### TARGET INFORMATION

<b>Gene ID</b>	<a href="#">10367</a>
<b>Gene Symbol</b>	<a href="#">MICU1</a>
<b>Uniprot ID</b>	<a href="#">MICU1_HUMAN</a>
<b>Immunogen</b>	
<b>Immunogen Region</b>	113-126
<b>Specificity</b>	This antibody is expected to recognize reported isoforms 1 and 2 (NP_006068.2; NP_001182447.1).
<b>Immunogen Sequence</b>	EYENRIRAYSTPDK



STJ72551 (0.5 µg/ml) staining of K562 lysate (35 µg protein in RIPA buffer). Primary incubation was 1 hour. Detected by chemiluminescence.