

Anti-Doublecortin/DCX antibody (232-242) (STJ72521)

STJ72521

GENERAL INFORMATION

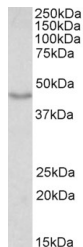
Product Type	Primary antibodies
Short Description	Goat polyclonal antibody anti-Doublecortin/DCX (232-242) is suitable for use in ELISA and Western Blot research applications.
Applications	Pep-ELISA, WB
Host/Source	Goat
Reactivity	Human, Mouse, Rat, Dog, Pig, Cow

PRODUCT PROPERTIES

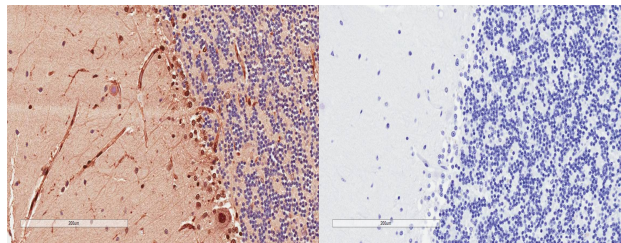
Clonality	Polyclonal
Clone ID	
Concentration	0.5 mg/mL
Conjugation	Unconjugated
Purification	Purified from goat serum by ammonium sulphate precipitation followed by antigen affinity chromatography using the immunizing peptide.
Dilution Range	WB-0.01-0.03µg/ml IHC-2-4µg/ml
Formulation	IF-Strong expression of the protein seen in the cytoplasm of HepG2 and KNRK cells. 5-10µg/ml ELISA-antibody detection limit dilution 1:32000.
Isotype	IgG
Storage Instruction	0.5 mg/ml in Tris saline, 0.02% sodium azide, pH7.3 with 0.5% bovine serum albumin. NA Store at-20 on receipt and minimise freeze-thaw cycles.

TARGET INFORMATION

Gene ID	1641
Gene Symbol	DCX
Uniprot ID	DCX_HUMAN
Immunogen Region	232-242
Specificity	This antibody is expected to recognize all four reported isoforms (NP_000546.2; NP_835365.1; NP_835364.1; NP_001182482.1). Reported variants represent identical protein: NP_835364.1 and NP_835366.1.
Immunogen Sequence	KTSANMKAPQS

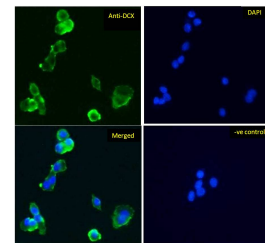


STJ72521 (0.01µg/ml) staining of Mouse fetal Brain lysate (35µg protein in RIPA buffer). Detected by chemiluminescence.



STJ72521 (2µg/ml) staining of paraffin embedded Human Cerebellum. Microwaved antigen retrieval with citrate buffer pH 6, HRP-staining.

STJ72521 Negative Control showing staining of paraffin embedded Human Cerebellum, with no primary antibody.



STJ72521 Immunofluorescence analysis of paraformaldehyde fixed HepG2 cells, permeabilized with 0.15% Triton. Primary incubation 1hr (5µg/ml) followed by Alexa Fluor 488 secondary antibody (1µg/ml), showing cytoplasmic staining. The nuclear stain is DAPI (blue). Negative control: Unimmunized goat IgG (10µg/ml) followed by Alexa Fluor 488 secondary antibody (1µg/ml).

This product is suitable for in-vitro studies under the RESEARCH USE ONLY [RUO] licence. This product must not be used as for diagnostic or other medical purposes.
St John's Laboratory Ltd, Knowledge Dock Business Centre, University Way, London, E16 2RD | Tel: 0208 223 3081