

Anti-GNB2L1 antibody (Internal) (STJ72485)

STJ72485

GENERAL INFORMATION

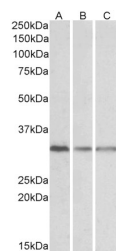
Product Type	Primary antibodies
Short Description	Goat polyclonal antibody anti-GNB2L1 (Internal) is suitable for use in ELISA and Western Blot research applications.
Applications	Pep-ELISA, WB
Host/Source	Goat
Reactivity	Human, Mouse, Rat, Dog, Cow

PRODUCT PROPERTIES

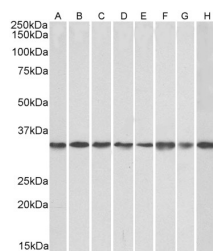
Clonality	Polyclonal
Clone ID	
Concentration	0.5 mg/mL
Conjugation	Unconjugated
Purification	Purified from goat serum by ammonium sulphate precipitation followed by antigen affinity chromatography using the immunizing peptide.
Dilution Range	WB-0.1-0.3µg/ml IHC-3.75µg/ml ELISA-antibody detection limit dilution 1:128000.
Formulation	0.5 mg/ml in Tris saline, 0.02% sodium azide, pH7.3 with 0.5% bovine serum albumin. NA
Isotype	IgG
Storage Instruction	Store at-20 on receipt and minimise freeze-thaw cycles.

TARGET INFORMATION

Gene ID	10399
Gene Symbol	RACK1
Uniprot ID	RACK1_HUMAN
Immunogen	
Immunogen Region	Internal
Specificity	
Immunogen Sequence	NTLGVCKYTVQDESH



STJ72485 (0.1µg/ml) staining of Human Lymph Node (A), Mouse Spleen (B) and Rat Spleen (C) lysates (35µg protein in RIPA buffer). Detected by chemiluminescence.



STJ72485 (0.1µg/ml) staining of NIH3T3 (A), HeK293 (B), HeLa (C), A431 (D), A549 (E), MCF7 (F), Jurkat (G), K562 (H) lysates (35µg protein in RIPA buffer). Detected by chemiluminescence.

This product is suitable for in-vitro studies under the RESEARCH USE ONLY [RUO] licence. This product must not be used as for diagnostic or other medical purposes.
St John's Laboratory Ltd, Knowledge Dock Business Centre, University Way, London, E16 2RD | Tel: 0208 223 3081