

Anti-SCOC antibody (Internal) (STJ72482)

STJ72482

GENERAL INFORMATION

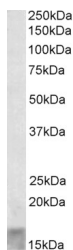
Product Type	Primary antibodies
Short Description	Goat polyclonal antibody anti-SCOC (Internal) is suitable for use in ELISA research applications.
Applications	Pep-ELISA
Host/Source	Goat
Reactivity	Human, Mouse, Rat, Dog, Cow

PRODUCT PROPERTIES

Clonality	Polyclonal
Clone ID	
Concentration	0.5 mg/mL
Conjugation	Unconjugated
Purification	Purified from goat serum by ammonium sulphate precipitation followed by antigen affinity chromatography using the immunizing peptide.
Dilution	WB-0.1-0.3µg/ml
Range	ELISA-antibody detection limit dilution 1:32000.
Formulation	0.5 mg/ml in Tris saline, 0.02% sodium azide, pH7.3 with 0.5% bovine serum albumin. NA
Isotype	IgG
Storage	Store at -20 on receipt and minimise freeze-thaw cycles.
Instruction	

TARGET INFORMATION

Gene ID	60592
Gene Symbol	SCOC
Uniprot ID	SCOC_HUMAN
Immunogen	
Immunogen Region	Internal
Specificity	This antibody is expected to recognize all six reported isoforms (NP_001146956.1; NP_001147135.1; NP_001147024.1; NP_115936.2; NP_001147107.1; NP_001147162.1). Reported variants represent identical protein: NP_001147057.1, NP_001146918.1, NP_115936.2
Immunogen Sequence	HTLEDLSARVDVAVKE



STJ72482 (0.1 µg/ml) staining of Human Skeletal Muscle lysate (55µg protein in RIPA buffer). Primary incubation was 1 hour. Detected by chemiluminescence.

This product is suitable for in-vitro studies under the RESEARCH USE ONLY [RUO] licence. This product must not be used as for diagnostic or other medical purposes.
 St John's Laboratory Ltd, Knowledge Dock Business Centre, University Way, London, E16 2RD | Tel: 0208 223 3081