

Anti-SLC47A2 antibody (Internal) (STJ72481)

STJ72481

GENERAL INFORMATION

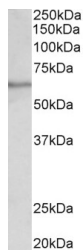
Product Type	Primary antibodies
Short Description	Goat polyclonal antibody anti-SLC47A2 (Internal) is suitable for use in ELISA, Western Blot, Immunofluorescence and Immunohistochemistry research applications.
Applications	Pep-ELISA, WB, IF, IHC
Host/Source	Goat
Reactivity	Human

PRODUCT PROPERTIES

Clonality	Polyclonal
Clone ID	
Concentration	0.5 mg/mL
Conjugation	Unconjugated
Purification	Purified from goat serum by ammonium sulphate precipitation followed by antigen affinity chromatography using the immunizing peptide.
Dilution Range	WB-0.1-0.3µg/ml ELISA-antibody detection limit dilution 1:32000.
Formulation	0.5 mg/ml in Tris saline, 0.02% sodium azide, pH7.3 with 0.5% bovine serum albumin. NA
Isotype	IgG
Storage Instruction	Store at -20 on receipt and minimise freeze-thaw cycles.

TARGET INFORMATION

Gene ID	146802
Gene Symbol	SLC47A2
Uniprot ID	S47A2_HUMAN
Immunogen Region	Internal
Specificity	This antibody is expected to recognize both reported isoforms (NP_690872.2; NP_001093116.1).
Immunogen Sequence	QRAESTATRPQPEK



STJ72481 (0.1µg/ml) staining of Human Testis lysate (35µg protein in RIPA buffer). Primary incubation was 1 hour. Detected by chemiluminescence.