

Anti-parotid secretory protein-Mouse antibody (146-160) (STJ72466)

STJ72466

GENERAL INFORMATION

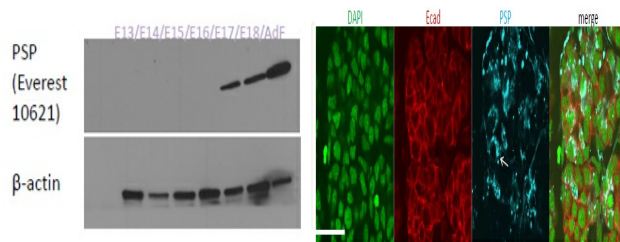
Product Type	Primary antibodies
Short Description	Goat polyclonal antibody anti-parotid secretory protein-Mouse (146-160) is suitable for use in ELISA, Western Blot and Immunohistochemistry research applications.
Applications	Pep-ELISA, WB, IHC
Host/Source	Goat
Reactivity	Mouse

PRODUCT PROPERTIES

Clonality	Polyclonal
Clone ID	
Concentration	0.5 mg/mL
Conjugation	Unconjugated
Purification	Purified from goat serum by ammonium sulphate precipitation followed by antigen affinity chromatography using the immunizing peptide.
Dilution Range	WB-1-3µg/ml ELISA-antibody detection limit dilution 1:128000.
Formulation	0.5 mg/ml in Tris saline, 0.02% sodium azide, pH7.3 with 0.5% bovine serum albumin. NA
Isotype	IgG
Storage Instruction	Store at -20 on receipt and minimise freeze-thaw cycles.

TARGET INFORMATION

Gene ID	
Gene Symbol	
Uniprot ID	
Immunogen	
Immunogen Region	146-160
Specificity	
Immunogen Sequence	KTNAQTGLPEVTIGK



STJ72466 (1µg/ml) staining of Mouse Mandibular Gland cell lysates (35µg protein in RIPA buffer). Primary incubation was 1 hour. Detected by chemiluminescence (Super Signal).

STJ72466 (4µg/ml) staining of Mouse Submandibular gland cells (in blue). Counter staining of Ecad in red and nuclear staining in green.

This product is suitable for in-vitro studies under the RESEARCH USE ONLY [RUO] licence. This product must not be used as for diagnostic or other medical purposes.
St John's Laboratory Ltd, Knowledge Dock Business Centre, University Way, London, E16 2RD | Tel: 0208 223 3081