

Anti-GPM6A antibody (Internal) (STJ72438)

STJ72438

GENERAL INFORMATION

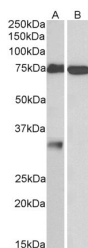
Product Type	Primary antibodies
Short Description	Goat polyclonal antibody anti-GPM6A (Internal) is suitable for use in ELISA and Western Blot research applications.
Applications	Pep-ELISA, WB
Host/Source	Goat
Reactivity	Human, Mouse, Rat, Dog

PRODUCT PROPERTIES

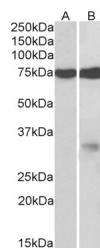
Clonality	Polyclonal
Clone ID	
Concentration	0.5 mg/mL
Conjugation	Unconjugated
Purification	Purified from goat serum by ammonium sulphate precipitation followed by antigen affinity chromatography using the immunizing peptide.
Dilution Range	IHC-3.75µg/ml ELISA-antibody detection limit dilution 1:32000.
Formulation	0.5 mg/ml in Tris saline, 0.02% sodium azide, pH7.3 with 0.5% bovine serum albumin. NA
Isotype	IgG
Storage Instruction	Store at -20 on receipt and minimise freeze-thaw cycles.

TARGET INFORMATION

Gene ID	2823
Gene Symbol	GPM6A
Uniprot ID	GPM6A_HUMAN
Immunogen	Internal
Region	
Specificity	This antibody is expected to recognize all reported isoforms (NP_005268.1; NP_963885.1; NP_963886.1). Reported variants represent identical protein: NP_963885.1, NP_005268.1.
Immunogen Sequence	QTYFEMARTAGD



STJ72438 (1µg/ml) staining of Human Cerebellum (A) and Olfactory Bulb (B) lysates (55µg protein in RIPA buffer). Detected by chemiluminescence.



STJ72438 (2µg/ml) staining of fetal Mouse (A) and Rat (B) Brain lysates (55µg protein in RIPA buffer). Detected by chemiluminescence.

This product is suitable for in-vitro studies under the RESEARCH USE ONLY [RUO] licence. This product must not be used as for diagnostic or other medical purposes.
St John's Laboratory Ltd, Knowledge Dock Business Centre, University Way, London, E16 2RD | Tel: 0208 223 3081